

EST. 1782
sworders
FINE ART AUCTIONEERS



Asian Art

Friday 17 May 2019 at 10am







SWORDERS LONDON

THE LONDON OFFICE - THE LONDON AUCTION

Currently consigning London themed works:

Architecture | Books | Maps | Pictures | Prints | Posters | Photographs | Memorabilia | Collectables
Royalty | Punk Rock | The Olympics | London Transport | Militaria | The Swinging Sixties

Auction Wednesday 20 November - Entries close Friday 13 September

Please contact Mark Wilkinson

T: 0203 971 2500 E: london@sworder.co.uk W: www.sworder.co.uk

Sworders London | 15 Cecil Court | London | WC2N 4EZ

ASIAN ART

at the Stansted Mountfitchet Auction Rooms

Friday 17 May 2019 at 10am



ORDER OF SALE

Lots 1 - 12	Indian, Persian and South-East Asian Works of Art
Lots 13 - 136	Chinese Porcelain and Ceramics
Lots 137 - 172	Chinese Jade
Lots 173 - 210	Chinese Silver, Cloisonné and Metalware
Lots 211 - 288	Chinese Works of Art
Lots 289 - 312	Chinese Works on Paper
<i>10 minute break</i>	
Lots 313 - 328	Chinese Furniture
Lots 329 - 331	Books
Lots 332 - 335	Japanese Porcelain and Ceramics
Lots 336 - 343	Japanese Cloisonné and Metalware
Lots 344 - 369	Japanese Works of Art and Furniture

Following the above sale, there will be additional selected items of Chinese and Japanese porcelain and works of art (lots 370 to 509)

VIEWING TIMES

LONDON VIEWING

Sworders Auctioneers

15 Cecil Court, London WC2N 4EZ

Friday	10 May	11am - 6pm
Saturday	11 May	11am - 8.30pm
Sunday	12 May	11am - 5pm
Monday	13 May	11am - 5pm

STANSTED MOUNTFITCHET VIEWING

Sworders Auction Rooms

Cambridge Road, Stansted CM24 8GE

Wednesday	15 May	9am - 5pm
Thursday	16 May	9am - 5pm
Friday	17 May	from 9am

ONLINE BIDDING

Bid live via www.sworder.co.uk (3% surcharge)

本图录中文版本部分仅作参考，如有疑义，请以英文版本为准

FURTHER INFORMATION

Contact: Yexue Li

01279 817778

auctions@sworder.co.uk

To obtain more detailed images and condition reports for lots in this catalogue, please visit our website www.sworder.co.uk



INDIAN, PERSIAN AND SOUTH-EAST ASIAN WORKS OF ART 1-12



3

Lot 1

An Indo-Persian silver dagger, 19th century, the hilt engraved with a fish, the sheath with a hunting scene of a leopard chasing a rabbit and a deer, 30cm long approximately
£100 - 150

Lot 2

Spare lot

Lot 3

A Thai bronze votive plaque, probably Ayutthaya Period (1351-1767), in Sukhothai style, cast in metal relief, depicting the walking Buddha, 19.5 x 7cm
£100 - 150

Provenance: From the estate of an archaeologist who worked for the Ashmolean Museum.



1

Lot 4

A pair of Thai silver candlesticks, each of baluster form on a circular base, decorated with Hindu gods in relief, stamped Thailand Sterling, 22.8cm high, another silver pair, decorated with Hindu gods amongst scrolls, stamped Sterling Thailand, 11cm high, and a Thai silver hinged box, the top decorated with figures at battle amongst scrolls, stamped mark Sterling Siam, 11cm square (5)
£120 - 150

Lot 5

A Thai silver bowl, of circular form, with a border decorated with flowers in relief, stamped mark LKB.800, 24.3cm diameter, 879.5g, and a Thai silver ladle, the handle with foliage and flowers, stamped mark LKB.800, 25cm long, 146.4g (2)
£300 - 500

Lot 6

An Islamic copper vase, decorated with panels of calligraphy and stylised ornaments in overlaid silver, 15.5cm high
£60 - 80



4



5



6



7



9



8

Lot 7

A Burmese silver bowl,
with moulded figures in relief, seated in a pavilion surrounded by attendants,
dancing or walking under umbrellas, all against a matted ground between
foliate scroll borders,
20.6cm diameter, 1080g
£300 - 500

Lot 8

An Indian silver two-handled sugar bowl and cover,
unmarked, of tapering oval form, chased with foliate scrolls in a spiral,
the finial and handles in the shape of a snake,
13cm high, 724.8g
£200 - 300

Lot 9

A large Burmese brass bowl,
of circular form, with moulded Ganesha in silver holding precious objects in
oval roundels, between two bead borders above a border with leaves in mixed
metal,
30.5cm diameter
£150 - 200

Lot 10

A Vietnamese wood pagoda,
early 20th century, of heptagon form, each side decorated with figures, birds
and flowers in mother-of-pearl in oval panels surrounded by foliate scrolls,
154cm high (2)
£2,000 - 2,500



10



11



11 reverse

Lot 11

An Indian copper-alloy Jainism tirthankara shrine,
9th-10th century, cast in openwork with the principal image of a tirthankara seated in dyhanasana
mudra on a throne, surrounded by standing jinas in architectural niches forming an arched canopy,
all on a rectangular plinth, the reverse incised with a Sanskrit inscription,
14.4cm high
£150 - 250

In Jainism, a tirthankara is a saviour and spiritual teacher of the dharma and also relates to the
founder of a tirtha, which is a fordable passage across the sea of interminable births and deaths
making a path for others to follow.

Lot 12

A collection of Tibetan jewellery,
19th century, inlaid with sapphires, rubies, emeralds, quartz and turquoise, on a metal ground with
scrolls in gilt,
4.2 to 17.2cm long (7)
£1,000 - 1,500



12

CHINESE PORCELAIN AND CERAMICS

13-136

Lot 13

A Chinese earthenware cocoon jar,
Han dynasty (206 BC-AD 220), the plump
shape in imitation of a silkworm's cocoon,
painted with symmetrical lines and scrolls in
red and orange against a grey slip ground,
21.5cm high

£100 - 120

汉 彩绘陶茧形壶



13

Lot 14

A large Chinese pottery figure,
Tang dynasty (618-907), of a matron standing in
an elegant swaying pose, her hands clasped within the
full sleeves of her long robes, which fall in deep folds to the
flat, shaped base, the face modelled with fully rounded features framed
by her long hair drawn into an elaborate coiffure, arranged in a dramatic
crescent, all covered in white slip, showings traces of red and black
pigments,
48cm high

£800 - 1,200

Provenance: Nicholas Pitcher Oriental Art, London;
Woolley & Wallis, 20 May 2009, Lot 172.

唐 仕女陶俑



14

Lot 15

Spare lot

Lot 16

A Chinese qingbai ware cup stand,
Northern Song Dynasty (960-1127), of typical form covered with a light sea blue glaze,
12cm diameter

£400 - 600

北宋 青白盞托



16

Lot 17

A Chinese qingbai ware vase,
Northern Song Dynasty (960-1127), of octagonal form on a tall foot with flared mouth,
covered with a light sea blue glaze,
22.4cm high

£1,200 - 1,500

北宋 青白八方瓶



17



18

Lot 18

A Chinese qingbai ware cup stand, Southern Song Dynasty (1127-1279), of typical form in the shape of a lotus leaf with lobed rim, the centre incised with flower petals, all covered with a light blue glaze,

13cm diameter

£1,200 - 1,500

南宋 青白莲花盏托



19

Lot 19

A collection of Chinese jarlets, Song to Ming dynasty,

4 to 8cm,

including a blue and white example with loop handles,

Yuan dynasty (1279-1368), painted with sprigs of flowers,

5.2cm high, together with

a Chinese moulded celadon flask,

18th/19th century, decorated with scrolling lotus,

5.5cm high, and

a Vietnamese blue and white example,

15th/16th century, painted with sprigs of flowers,

6.5cm high (12)

£120 - 150

小罐 一组十二件



20

Lot 20

A collection of Chinese jarlets,

Yuan dynasty (1279-1368), comprising:

five Longquan celadon examples, all with loop

ring handles, four with moulded decoration,

6 to 7cm high,

a lead-glazed example, moulded with two

dragons chasing flaming pearls,

7cm high, and

six South China examples, all covered with

various brown glaze,

5 to 7.5cm high (12)

£120 - 150

小罐 一组十二件



21

Lot 21

A collection of Chinese Longquan celadon jarlets,

Song-Yuan dynasty, moulded with ribs or

flowers,

4.5 to 6.5cm high, and

a later example,

with crackled glaze,

6.5cm high, and

two Thai Sawankhalok pots,

15th/16th century, with loop handles,

each 11.5cm high (10)

£100 - 120

小罐 一组十件



22

Lot 22

A large Chinese blue and white bowl,

of circular form on a short circular foot with

flared mouth, painted in the Yuan style, the

centre with melons, grapes, tendrils and

bamboo by a rock, the rim with a foliage scroll

border, the exterior painted with scrolling lotus

above a false gadroon border,

29.8cm diameter

£600 - 700

青花瓜果纹大碗



23



24



25



26

Lot 23

A Chinese Longquan celadon plate, Song-Yuan dynasty, the centre incised with a lotus flower above a lotus leaf, 24.6cm diameter, and two celadon saucers, one with moulded twin fish, 13.3cm diameter, the other lobed with an incised flower, 13cm diameter (3)
£200 - 300

宋至元 龙泉青瓷盘 一组三件

Lot 24

A Chinese Longquan celadon censer, Yuan dynasty (1279-1368), of circular form with a tapering base, on three shaped feet, with moulded floret decoration, 13.5cm diameter
£300 - 400

元 龙泉青瓷花卉纹三足香炉

Lot 25

A Chinese Longquan celadon teapot, Yuan dynasty (1279-1368), of globular form with an everted rim, the body ribbed, 12cm long
£200 - 300

元 龙泉青瓷茶壶

Lot 26

A Chinese Ding ware bowl, of circular form on a short circular foot, the centre incised with a flower, the rim with silver mounting, 16.2cm diameter
£300 - 400

定窑划花碗

Lot 27

A Chinese Ding ware dish, of circular form, the centre moulded with a rock in a garden within a lobed gadroon border, 13.3cm diameter
£400 - 600

定窑洞石纹碟



27

Lot 28

A Chinese Jun glazed pottery flask, moulded in imitation of leather skins for a water or wine pouch, with a handle imitating string to the top, covered in purple and blue glaze, 29.5cm high
£300 - 500

钧釉皮囊壶



28



29



31



32



30

Lot 29

A Chinese Cizhou ware vase, of baluster form on a flared foot, painted with incised scrolling lotus above a false gadroon border in black on a white slip, all under a clear glaze, 34cm high
£400 - 600

磁州窑白地黑花花卉纹瓶

Lot 30

A Chinese Jun ware tea bowl, of circular form on a short circular foot, all covered in a blue glaze, 7cm diameter
£600 - 800

钧釉茶碗

Lot 31

A Chinese blue and white vase, in the Yuan style, the pear-shaped body painted with scrolling flowers below banana leaf and gadroon borders, the neck with two handles, on a square stand painted with scrolls, 26cm high
£500 - 700

青花缠枝莲纹瓶



33



34

Lot 32

A Chinese Ding ware vase, Jin to Ming dynasty, of baluster form on a short flared foot, the mouth in the shape of a cup, the neck, shoulder and the mouth encircled by incised double bands, 26.8cm high
£600 - 800

金至明 定窑弦纹壶

Lot 33

A Chinese wucai gu vase, Wanli (1573-1620), painted with scrolling lotus in underglaze blue and decorated with red and green overglaze enamels, lobed handles, 26.5cm high
£800 - 1,000

明万历 五彩缠枝莲纹花瓶

Lot 34

A Chinese blue and white vase, late Ming, of lobed form, painted with sprigs of flowers under a key fret border, the rim with metal mounting, four character Tianxia Taiping mark to base, 13cm
£200 - 300

明晚期 青花瓜棱花卉纹瓶

Lot 35

A Chinese blue and white bowl, late Ming dynasty, of circular form, painted with figures on a boat, accompanied by the poem 'Ode on the Red Cliffs' by the Northern Song poet Su Shi, *four character Yongle mark to the interior and a Fu mark to the base*, 16.5cm diameter
£100 - 150

明晚期 青花诗文纹碗 《永乐年制》楷书款



35

Lot 36

A Chinese blue and white vase, Transitional period, of baluster form with a tall cylindrical neck, painted with literati seated by rocks or under a tree appraising the moon, the neck with banana leaves to the rim, 27cm high
£400 - 600

明末清初 青花高士图瓶



36

Lot 37

A Chinese blue and white kendi, late Ming dynasty, painted with sprigs of flowers in shaped panels, the neck with banana leaves, 19cm high, a qingbai ware vase, Song dynasty (960-1279), of lobed pear form with a tapering neck, covered with a light blue glaze, 18.2cm high, and a Vietnamese bowl, 15th/16th century, later cold painted with a phoenix and foliate scrolls, 16.5cm diameter (3)
£200 - 300

明晚期 青花花卉纹军持

宋 青白瓜棱纹瓶

及 十五至十六世纪 越南凤凰花卉纹碗 一组三件



37

Lot 38

A Chinese wucui charger, Kangxi (1662-1722), the centre painted with mandarin ducks in a lotus pond, the border painted with Eight Daoist Immortals, each standing on the back of a sea creature above waves, 39cm diameter
£500 - 800

清康熙 五彩荷塘鸳鸯纹盘



38



39

Lot 39

A Chinese famille verte jar, 17th century, of ovoid form, painted with peony in red and yellow amongst tendrils below a ruyi head and diapered border, 18cm high
£200 - 300

An identical but smaller plate can be found in the collection of the Metropolitan Museum of Art, Accession Number: 79.2.1288.

十七世纪 五彩缠枝莲纹罐



40

Lot 40

A Chinese iron red vase, Kangxi (1662-1722), the pear-shaped body on a short foot with a tall tapering neck, surmounted by a broad ring in the upper part painted with chrysanthemums in gilt, the body painted with alternating continuous spiral bands of iron red and white stripes, 21.5cm high
£450 - 600

For a similar vase, see Sotheby's, New York, 2 February 2019, lot 711 and Victoria and Albert Museum, c.102-1956.

清康熙 螺旋纹胆瓶

Lot 41

A Chinese blue and white gu vase, Kangxi (1662-1722), the top section painted with figures in a sitting room, the centre section painted with a qilin in a landscape or a carp in waves between key fret borders, the bottom section with a fisherman meeting an official, 47.2cm high
£1,500 - 2,000

清康熙 青花人物故事图花瓶



41

Lot 42

A Chinese sancai Guanyin, Kangxi (1662-1722), seated on a lotus pedestal on a raised stepped plinth, his right hand holding the stem of a lotus flower resting on his right knee, wearing a long robe with thick folds covered in green glaze, 15.5cm high (2)
£400 - 500

清康熙 素三彩观音坐像

Lot 43

A Chinese wucai dish, Transitional period, of quatrefoil shape, painted with a literatus seated in a boat with birds flying overhead, the riverbank with a willow tree and rockwork, two character seal mark Daguang to base, 'Catherine Hunt, Oriental Antiques, 4928' label, 18cm long
£700 - 900

Provenance: An English private collection.

明末清初 五彩高士花口碟 《大光》青花篆书款



42



43

Lot 44

A Chinese blue and white double gourd vase, Kangxi (1662-1722), of lobed form, painted with sprigs of flowers, 15.5cm high
£300 - 500

清康熙 青花花卉纹葫芦瓶



44

Lot 45

A Chinese blue and white jug, Kangxi (1662-1722), of lobed form, painted with figures and flowers in shaped panels, with a silver cover and mount to the mouth, 13.6cm high
£100 - 150

清康熙 青花人物花卉纹执壶



45



45A



46

Lot 45A

A pair of Chinese blue and white bottles, Kangxi (1662-1722), each of pear shape with a garlic mouth, painted with scrolling flowers, the mouth with a ruyi shaped border and a silver cover and mounts, 21cm (2)
£700 - 1,000

清康熙 青花缠枝花卉纹蒜头瓶 一对

Lot 46

A collection of Chinese blue and white, Kangxi (1662-1722), comprising three saucers and a vase painted with flowers, 10.9 to 13.8cm, and two dishes, late 18th century, painted with landscapes, 16 to 16.7cm (6)
£150 - 200

清十七至十八世纪 青花盘 及 小瓶 一组六件



47

Lot 47

A Chinese blue and white rouleau vase, 19th century, of cylindrical form with a straight tall neck, painted with warriors at battle amongst pine trees, the shoulder with flowers and precious objects against a diapered border, the neck with literati and attendants, six character Kangxi mark, 79cm high
£1,600 - 1,800

清十九世纪 青花人物故事图棒槌瓶
《大清康熙年制》青花楷书款



48



49



50



51

Lot 48

A Chinese blue and white jar and cover, 18th century, painted with scrolling lotus between *shou* characters, all between a *ruyi* head and a false gadroon border, the cover similarly decorated, 24.2cm high, wood stand (3)
£300 - 400

清十八世纪 青花寿字纹盖罐 连木底座

Lot 49

A collection of Chinese blue and white plates, 18th century, comprising:
a set of four plates, of circular form, painted with flowers, bamboo and a rock, 23.4cm diameter,
a set of nine plates, painted with sprigs of flowers, 23.4cm diameter, and
three soup bowls, of octagonal form, painted with mountainous landscapes, 23.6cm diameter (16)
£200 - 300

清十八世纪 青花盘 一组十六件

Lot 50

A collection of four Chinese blue and white plates, Qianlong (1736-1795), comprising three meat dishes, painted with landscapes, one with incense burners on a table below a willow tree by peony, 36.2 to 41.2cm diameter, a soup bowl, of octagonal form, painted with a lady carrying a hoe on her shoulder walking under a willow tree, 23cm diameter, and a later blue and white spoon tray, painted with a landscape, 15.1cm long (5)
£150 - 200

清乾隆 青花盘 一组五件

Lot 51

A collection of four Chinese blue and white meat dishes, Qianlong (1736-1795), each of shaped octagonal form, painted with figures, pavilions and trees in a landscape, the border with *ruyi* heads and key frets, 25.4 to 44cm (4)
£200 - 300

清乾隆 青花盘 一组四件

Lot 52

A Chinese blue and white ginger jar, 18th century, painted with phoenixes and dragons amongst clouds, 22.5cm high
£300 - 400

清十八世纪 青花龙凤纹罐



52



53

Lot 53

Two Chinese export Imari chargers, c.1716, each decorated with the arms of Martin in gilt and copper-red, surrounded by panels of flowers, rocks and pavilions amongst foliate scrolls, 35.5cm and 40cm diameter (2)

£700 - 900

清约1716年 伊万里式徽章纹大盘 一组两件



54

Lot 54

A Chinese export Imari part service,

c.1716, comprising:

four plates, 22cm,

a bowl, 19.3cm diameter,

a spoon tray, 14.7cm long, and

a tea caddy, 11.5cm high,

all decorated with the arms of Martin in gilt and copper-red, surrounded by panels of flowers amongst foliate scrolls (8)

£500 - 800

清约1716年 伊万里式徽章纹盘 及 茶叶罐 一组八件

This Imari service was made for Captain Matthew Martin, captain of the 32-gun East Indiaman 'Marlborough' which was saved by his seamanship at Canton in 1716 with a cargo then worth £200,000 (equivalent to £5 million today). He was given £1000 by the Company and a gold medal set with twenty-four diamonds. He later became Director of the Company.



55



55 mark

Lot 55

A Chinese blue and white bowl,

19th century, painted with scrolling lotus below Eight Buddhist Emblems, above a false gadroon border, the circular foot painted with spuming waves, the interior of the bowl painted with four parasols in a roundel, six character Qianlong mark,

26cm diameter, wood stand (2)

£400 - 600

清十九世纪 青花缠枝莲八宝纹碗 《大清乾隆年制》青花篆书款 连木底座



56

Lot 56

A pair of Chinese blue and white bowls and covers, 19th century, painted with dragons chasing flaming pearls amongst clouds above waves, *six character Qianlong mark*, 11.3cm diameter (4)
£600 - 800

清十九世纪 青花双龙戏珠纹盖碗
《大清乾隆年制》青花楷书款 一对



57

Lot 57

A Chinese blue and white planter, c.1900, of shaped rectangular form on four bracket feet, painted with landscapes, the rim with foliage scrolls, all against a cracked beige ground, 24.3cm long
£70 - 100

清约1900年 青花山水图水八仙盆

Lot 58

A Chinese blue and white teapot, Kangxi (1662-1722), of drum form with moulded studs, painted with precious objects, the cover with a Buddhist lion knop seated in the middle of a roundel with *ruyi* heads, 18cm long (2)
£1,500 - 2,000

清康熙 青花鼓钉纹博古图茶壶



58



59

Lot 59

A Chinese blue and white dish, Wanli (1573-1620), of lobed circular form, painted with a landscape surrounded by a border depicting the Eight Buddhist Emblems, 19cm diameter, another blue and white bowl, painted with *chilong* amongst scrolls, *four character mark Fugui Changming*, 17.5cm diameter, and a Chinese blue and white shallow bowl, 19th century, of circular form with a flared rim, painted with scrolling peony, *four character mark Fuman Tang Ji*, 14.2cm diameter (3)
£100 - 150

明至清 青花盘 及 碗 一组三件

Lot 60

A Chinese blue and white meat dish, 18th century, of octagonal form, painted with peony and a willow tree in a garden, with diapered borders, 46.5cm long
£200 - 300

清十八世纪 青花花卉图八方盘

Lot 61

A Chinese Cadogan wine pot, possibly 19th century, in the form of a peach with moulded sprigs of leaves and flowers depicted in underglaze blue and red, all against a celadon ground, 14cm high
£200 - 300

清十九世纪(可能) 青瓷釉里红桃形倒流壶



60



61



62

Lot 62

A pair of Chinese famille rose bowls, painted with magnolia, lotus, chrysanthemum and prunus in roundels, surrounded by *lingzhi* and scrolling lotus against a yellow ground, the interior painted with flowers in blue, *six character Daoguang* mark, 14.7cm diameter (2)

£1,500 - 2,000

黄地开光花卉纹碗

《大清道光年制》青花篆书款 一对

Lot 63

A Chinese qingbai ware Shakyamuni, Qing dynasty (1644-1911), seated in a long robe, his right hand raised and his left hand resting on his knee, all under a sea blue glaze, face, chest and hands unglazed, 22.5cm high

£400 - 600

清 青白釉释迦牟尼坐像



63



64

Lot 64

A Chinese plate, Yongzheng (1723-1735), of circular form on a circular foot, the interior incised with a dragon chasing a flaming pearl amongst clouds, the underside glazed in blue, *six character Yongzheng* mark, 19.5cm diameter

£6,000 - 8,000

清雍正 霁蓝釉云龙纹盘 《大清雍正年制》青花楷书款



65

Lot 65

A Chinese porcelain bowl, Jiaqing or later, the centre moulded with a lotus flower, the exterior moulded with lotus flower petals with incised foliage flowers, all under a white glaze, six character Jiaqing mark, 18.4cm diameter
£2,000 - 3,000

清嘉庆或更晚 白釉莲花碗
《大清嘉庆年制》青花篆书款

Lot 66

A Chinese flambé glazed vase, Yongzheng or later, of rectangular form on a short foot with lug handles to the neck, moulded with peach-shaped panels to each side, covered overall in a rich glaze ranging from dark red to light blue tones, thinning to beige at the rim and corners, four character Yongzheng incised mark to base, 27cm high
£600 - 800

清雍正或更晚 窑变釉贯耳方壶
《雍正年制》篆书刻款



66



67

Lot 67

A Chinese altar vase, Yongzheng (1723-1735), of rectangular form, painted with a literatus either leaning towards a rock or admiring his *qin* in leaf-shaped panels, the other sides similarly decorated with flowers, all against a coral ground between key fret and *shou* roundel borders, 37.5cm high
£2,000 - 3,000

清雍正
珊瑚红地开光高士图四方瓶



68

Lot 68

A Chinese celadon vase, Qianlong (1736-1795), of rectangular tapering form under a pea green glaze, painted with finger citrons and peaches with underglaze blue and copper red in shaped panels, two handles to the shoulder, four character Qianlong mark, 13.7cm high
£2,800 - 3,500

清乾隆 豆青地开光青花
釉里红多福多寿纹四方瓶
《乾隆年制》青花篆书款



69



70

Lot 69

A Chinese meiping vase,
18th-19th century, of baluster form with tall shoulder, tapering
elegantly towards the slightly flared foot, with applied decoration of
scrolling lotus in relief between *ruyi* head and false gadroon borders,
all against a black ground,
28.5cm high
£400 - 600

清十八至十九世纪 黑地缠枝莲纹梅瓶

Lot 70

A Chinese tea bowl,
Yongzheng (1723-1735), of circular form on
a short circular foot, all under a white glaze,
six character Yongzheng mark in blue to base,
10.2cm diameter
£6,000 - 8,000

清雍正 白釉茶碗 《大清雍正年制》青花楷书款



70 mark

Lot 71

A Chinese famille rose vase,
Daoguang (1821-1850), of tapering square form, painted with three literati drinking
below a pine tree, attendants to their sides, the other sides with pine trees and flowers,
the neck with *shou* characters, Buddhist lion and ring handles, two character mark
Zaisou in iron red to base,
40cm high
£2,500 - 3,500

清道光 粉彩高士图铺首双环耳四方瓶 《载叟》矾红篆书款



71



72

Lot 72

A Chinese Jizhou ware yuhuchun vase, 19th century, of pear shape on a circular foot with flared mouth, decorated with dragons in shaped panels amongst scrolls below a banana leaf border, all against a black ground, 28.5cm high
£400 - 600

清十九世纪 吉州窑龙纹玉壶春瓶

Lot 73

A Chinese yellow ground and green enamelled plate, late Qing dynasty, of circular form with shallow rounded sides rising from a short foot, the centre incised with a sprig of magnolia, surrounded by lotus, peaches and pomegranates, the exterior similarly decorated with scrolling peony, 30cm diameter
£500 - 800

清晚期 黄地绿彩花卉纹盘



73



74



75



76

Lot 74

A Chinese wucai jar, Qing dynasty (1644-1911), of globular form with a short neck and a flared mouth, painted with peony and other flowers by a rock, surrounded by butterflies, the shoulder with florets against a diapered border, 13.5cm high, wood stand (2)
£1,000 - 1,200

清 五彩花卉纹罐 连木底座

Lot 75

A Chinese porcelain plate, of a dragon chasing a flaming pearl amongst clouds in green enamel, the underside similarly decorated, six character Yongzheng mark, 25cm diameter
£400 - 600

绿彩云龙纹盘

《大清雍正年制》青花楷书款

Lot 76

A large Chinese famille rose vase, 19th-20th century, of ovoid form, on a circular base with everted mouth, painted with the hundred boys at play in a garden within a mountainous landscape, above false gadroon and key fret borders, the neck painted with bats, chilong and precious objects amongst scrolling lotus against a yellow ground, chilong handles, six character Qianlong mark, 76.5cm high
£1,800 - 2,500

十九至二十世纪 粉彩百子图盘口瓶
《大清乾隆年制》矾红篆书款

Lot 77

A Chinese blue and white twin fish vase,
19th century, moulded with two addorsed
carp, details highlighted in underglaze
copper red,
23.5cm high
£200 - 300

清十九世纪 青花釉里红双鱼尊



77

Lot 78

A Chinese famille verte vase,
19th-20th century, of rouleau form,
painted with figures in a pavilion watching
a phoenix attracted to the music they are
playing, surrounded by bodhi, bamboo and
other trees in a landscape, six character
Kangxi mark,
38cm high
£600 - 800

十九至二十世纪 五彩人物故事图棒槌瓶
《大清康熙年制》青花楷书款

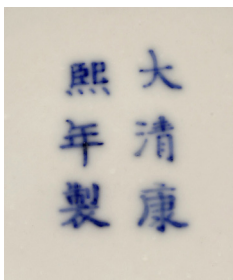


78

Lot 79

A pair of Chinese famille rose rouleau vases,
Guangxu (1875-1908), painted with Fu, Lu
and Shou, the reverse with an archaic incense
burner, Eight Buddhist Emblems to the neck and
shoulder, six character Kangxi mark to base,
36.5cm high (2)
£1,500 - 1,800

清光绪 粉彩三星高照图棒槌瓶
《大清康熙年制》青花楷书款 一对



79 mark



79



80 part lot

Lot 80

An extensive Cantonese dinner service, late 19th century, comprising: twelve warming dishes, 27cm wide, a tureen and cover with an en suite stand, 35.8cm wide, three serving dishes and covers, 24.2 to 28.5cm wide, all decorated with butterflies, fruit and sprigs of flowers, gilt knobs, *one serving dish cover replaced*, painted with figures and precious objects (21)
£1,000 - 1,500

清十九世纪末 广东粉彩花鸟图盘及碗 一组二十一件

Lot 81

A Chinese Longquan ware celadon vase, 19th-20th century, of baluster form with *ruyi* handles, the neck encircled with a moulded dragon, all under a celadon green glaze, 32cm high
£400 - 600

十九至二十世纪 龙泉窑青瓷贴塑龙纹瓶



81



82

Lot 82

A Chinese famille rose vase, 19th century, of globular form with cylindrical mouth, painted with figures in shaped panels, surrounded by flowers and butterflies, gilded elephant handles, 34cm high
£100 - 150

清十九世纪 广彩开光人物故事图象耳瓶



83

Lot 83

A pair of Chinese famille rose tureens and covers, Qianlong (1736-1795), of shaped rectangular form on a shaped flared foot, painted with birds, butterflies and flowers, the knob and handles moulded as flower buds, 35.5cm long (4)
£300 - 400

清乾隆 粉彩花鸟图盖碗 一对



84

Lot 84

A pair of Chinese Canton famille rose vases, Qing dynasty (1644-1911), of ovoid form with a flared mouth, painted with figures in a sitting room or fighting on horse back, surrounded by birds and flowers, Buddhist lion and ball handles, 60.5cm high (2)
£300 - 500

清 广东粉彩人物故事图瓶 一对

Lot 85

A Chinese Longquan ware celadon vase,
19th-20th century, of tapering mallet form with a flared mouth, the tall
neck with phoenix handles, covered with a thick celadon green glaze,
25.8cm high
£400 - 600

十九至二十世纪 龙泉窑青釉凤耳瓶

Lot 86

A Chinese famille verte vase,
Qing dynasty (1644-1911), of rouleau form, painted with pheasants,
quail and other birds, amongst peony, bamboo, magnolia and other
flowers, above a false gadroon border, the shoulder with precious objects
in shaped panels against a diapered ground, six character Kangxi mark,
43.5cm high
£300 - 500

Provenance: The Priory, Walsham-le-Willows.

清 五彩花鸟图棒槌瓶 《大清康熙年制》楷书款



85



86



87

Lot 87

A large Chinese famille verte figure,
19th century, of a peacock standing with its claws on *lingzhi*
issuing from a tall rockwork base entwined with leaves, its
feathers fanned out falling to the ground, all picked out in iron
red, blue, green, yellow, aubergine and gilt,
66cm high
£150 - 250

For a similar lot, but as a pair of phoenix figures, see Sotheby's,
New York, 20 October 2018, lot 1057 and Sotheby's, New York,
1 November 1986, lot 3, which were recorded and dated as
Kangxi period in Edgar Gorar and J F Blacker, 'Chinese Porcelain
and Hardstone', Vol. I, London, 1911, pl. 97.

A similarly modelled pair of peacocks of large size is illustrated in
Michael Cohen and William Motley, 'Mandarin and Menagerie:
Chinese and Japanese Export Ceramic Figures'. Volume I:
The James E Sowell Collection, Surrey, 2008, pp. 232-233,
cat. no. 16.8, where the authors date the pair as c.1820.

清十九世纪 五彩孔雀摆件



88



89

Lot 88

A Chinese blue dish,
late Qing dynasty, of circular form, under
a sky blue glaze, *six character Yongzheng*
mark to base, with later decoration of
scrolling flowers in white enamel,
21.4cm diameter
£100 - 200

清晚期 天蓝釉堆白缠枝莲纹盘
《大清雍正年制》楷书款

Lot 89

A Chinese famille rose millefleurs vase,
19th-20th century, of double gourd
form, painted with a multitude of flowers
including peony, chrysanthemum and
irises, a ribbon to the middle, *six character*
Qianlong mark in red,
40cm high
£400 - 600

十九至二十世纪 粉彩百花不落地葫芦瓶
《大清乾隆年制》矾红篆书款



90

Lot 90

A Chinese painted clay nodding-head figure,
late 18th/early 19th century, of a lady standing in a long blue robe with foliage scroll
borders, her skirt similarly decorated with flowers against a blue ground between orange
panels, holding a red fan in her left hand and a red handkerchief in her right hand,
approximately 28cm high, and
an associated square wood stand,
14.8 x 14.8 x 12cm (2)
£300 - 500

A group of related painted clay figures is in the collection of the Peabody Museum, Salem, Massachusetts, US, as illustrated in Carl Crossman, 'Decorative Arts of the China Trade', 1998, p.317, pl.112.

The largest collection of figures of this type is in Stockholm, Sweden at the Drottningholm Palace. In 1777, over one hundred were recorded there, collected to provide an authentic view of Chinese life with many representing artisans in various occupations. See David Howard, 'A Tale of Three Cities Canton, Shanghai and Hong Kong', 1997, pp.146-148.

These nodding-head figures existed in England at least as early as 1764, when Johann Zoffany painted the portrait of Queen Charlotte in her Dressing Room, with two standing figures depicted in the background. A number of similar but larger figures were bought by the Prince Regent for the Brighton Pavilion and are recorded in early engraved views of its interiors.

清十八世纪末/十九世纪初 彩绘陶仕女摇头立像 及木底座



91



92



93



94



95



96

Lot 91

A large Chinese famille rose meat dish, Qianlong (1736-1795), of shaped rectangular form, painted with a young scholar greeting a warrior in a garden, a lady and a boy standing beneath a blossoming magnolia tree, the border painted with pomegranate, finger citron, peaches and sprigs of flowers, 56cm wide
£200 - 300

清乾隆 粉彩人物故事图大盘

Lot 92^

A Chinese famille rose vase, of ovoid form, painted with the Eight Daoist Immortals in a garden, below a ruyi head and false gadroon border, the neck with scrolling lotus against a turquoise ground, six character Qianlong mark, 35cm high
£300 - 500

粉彩八仙图瓶

《大清乾隆年制》青花篆书款

^ Temporary Admission rules apply - please see page 109 for further details.

Lot 93

A Chinese famille verte moon flask, 19th-20th century, painted with figures below a pine tree in a roundel, the reverse with an official riding a horse, an attendant following him with his sword and luggage, surrounded by butterflies and flowers, chilong handles in blue, 44cm high
£400 - 600

十九至二十世纪 五彩人物故事图抱月瓶

Lot 94^

A Chinese Jun ware tea bowl, of tapering form with an everted rim on a short circular foot, covered with a glaze of purple, lavender and blue, 6cm diameter
£250 - 350

钧釉茶碗

^ Temporary Admission rules apply - please see page 109 for further details.

Lot 95^

A Chinese porcelain box and cover, of circular form, the exterior covered with an oxblood glaze, the interior and the base in olive green, 'Bluett & Sons, London' label, 5.5cm diameter (2)
£700 - 1,000

红釉印盒

^ Temporary Admission rules apply - please see page 109 for further details.

Lot 96

A Chinese famille rose vase, Qing dynasty (1644-1911), of lobed form, painted with a shou roundel encircled with bats amongst foliage scrolls, surrounded by scrolling lotus between ruyi head and false gadroon borders, moulded bat handles highlighted in gilt, all against a celadon ground, six character Qianlong mark, 35cm high
£800 - 1,000

Provenance: From a German estate.

清 豆青地粉彩多福多寿纹花口瓶



97

Lot 97**A Chinese wucan wine cup,**

19th century, of tapering form on a circular foot with a flared mouth, painted with mandarin ducks in a lotus pond, the reverse inscribed with a poem relating to lotus, followed by a seal reading *shang* ('to appreciate'), six character *Kangxi* mark, 4.9cm high
£600 - 800

清十九世纪 五彩花神杯 《大清康熙年制》青花楷书款



98

Lot 98**A Chinese famille rose plate,**

Qianlong (1736-1795), of lobed circular form painted with a bird standing on a blossoming prunus branch surrounded by a peony and a butterfly, 27.6cm diameter
£200 - 300

清乾隆 粉彩花鸟图花口盘



99

Lot 99**A Chinese blanc de Chine wine cup,**

18th century, in the shape of a libation cup, moulded in relief with a deer, a crane, a Buddhist lion and a dragon, all under pine trees, 9.9cm wide
5.7cm high, and
a soft paste figure,
of Li Tieguai, holding his crutch in his left hand and a double gourd in his right hand, 13.8cm high (2)
£150 - 250

清十八世纪 德化窑白釉鹤鹿同春纹犀角式杯
及 白釉李铁拐立像 一组两件



100



101

Lot 100**A large Chinese blanc de Chine incense holder,**

late 17th century, of a *qilin* seated on top of a rectangular plinth, 34cm high
£300 - 400

清十七世纪末 德化窑白釉麒麟香插

Lot 101**A Chinese Yaozhou ware celadon zhadou,**

19th-20th century, of globular form with a flared mouth, incised with foliage below banana leaves, 13cm high
£200 - 300

十九至二十世纪 耀州窑青瓷花卉纹渣斗

Lot 102

A pair of Chinese blanc de Chine figures, 18th century, of cockerels standing with one foot resting on a rock, 25 and 26cm high (2)
£200 - 300

清十八世纪 德化窑白釉公鸡摆件 一对



102

Lot 103

A Chinese bottle vase, 19th-20th century, decorated with sprigs of flowers in white, against a pea green ground, 38.5cm high
£500 - 700

十九至二十世纪
豆青地堆白折枝花卉纹瓶



103

Lot 104

A Chinese blanc de Chine incense burner, 18th century, in archaic bronze, globular form on three stud feet, the rim surmounted by a pair of arched handles, the wood cover with a ruyi knob in hardstone, 26.5cm high (2)
£400 - 600

清十八世纪
德化窑白釉三足香炉



104

Lot 105

A Chinese famille rose fish bowl, painted with butterflies between ruyi head and false gadroon borders, 47.5cm high
£300 - 500

粉彩百蝶纹缸



105

Lot 106

A Chinese porcelain brush lick, possibly Republic period (1912-1949), in the shape of a cloud with further moulded cloud decoration, all under a yellow glaze, four character Qianlong mark, 11.5cm wide, pierced wood stand with lingzhi (2)
£1,000 - 1,500

民国(可能)黄釉祥云纹笔舔
《乾隆年制》篆书模款 连木底座



106

Lot 107

A Chinese porcelain moon flask, with two chilong handles to the shoulder, all under a blue glaze, 31cm high
£150 - 250

霁蓝釉螭龙耳抱月瓶



107



108

Lot 108

A Chinese famille rose vase, Republic period (1912-1949), of globular form, painted with a continuous scene of people living on the shore of the river, between foliage scroll borders, the neck with double gourds and tendrils against a blue ground, six character Qianlong mark, 39cm high
£100 - 200

民国 粉彩人物故事图天球瓶
《大清乾隆年制》矾红篆书款



111



109

Lot 109

A Chinese famille verte vase, 20th century, of baluster form with a flared mouth, painted with Eight Daoist Immortals, between diapered borders, 58.5cm high
£300 - 500

二十世纪 五彩八仙图瓶



112



110

Lot 110

A Chinese famille rose vase, painted with boys at play in a garden, the shoulder with the Eight Buddhist Emblems, the neck with scrolling lotus against a pink ground, moulded bat handles, 57.5cm high
£1,500 - 2,000

粉彩百子图双耳瓶

Lot 111

A Chinese famille rose plate, of circular form with ruby back, painted with a lady and boys in a study, a bamboo table behind them with books, scrolls and precious objects, encircled with flowers in shaped panels against a diapered ground, 22.8cm diameter
£300 - 400

粉彩婴戏图盘

Lot 112

A Chinese blue and white ginger jar, c.1900, of ovoid form, painted with blossoming prunus against a blue ground, 28cm high
£100 - 150

清约1900年 青花冰梅纹罐

Lot 113

A Chinese famille rose plate, of circular form with flared mouth, decorated with blossoming peach branches against a turquoise ground, the underside with bats amongst clouds, *six character Qianlong mark*, 24.8cm diameter
£600 - 800

松石绿地粉彩多福多寿纹盘
《大清乾隆年制》青花楷书款



113

Lot 114

A Chinese porcelain jar and cover, 20th century, of baluster form, moulded in relief with an egret in a lotus pond, the domed cover similarly decorated with a spear knop, *four character mark Wang Bingrong zuo* in relief, 26.5cm high (2)
£250 - 350

二十世纪 雕瓷一鹭莲升纹将军盖罐
《王炳荣作》篆书款



114

Lot 115

A pair Chinese blue and white bowls, of circular form on a circular foot, painted with bats in overglaze copper red amongst clouds, the interior similarly decorated, *six character Xuantong mark*, 11.7cm diameter (2)
£500 - 800

青花洪福齐天纹碗
《大清宣统年制》青花楷书款 一对



115

Lot 116

A Chinese famille rose plaque, painted with a blossoming prunus tree with a poem by the Song dynasty poet Su Shi, dated 34th year of Republic (1945) with the signature of Tian Hexian, 19 x 13cm
£100 - 150

粉彩红梅诗文瓷板 田鹤仙款

怕愁贪睡独开迟，自恐冰容不入时。故作小红桃杏色，尚余孤瘦雪霜姿。



116

Lot 117

A Chinese famille verte charger, Republic period (1912-1949), painted with an official and a scholar greeting each other in a landscape, attendants by their side, the border with sea creatures in shaped panels surrounded by blossoming trees, 43.8cm diameter
£500 - 700

民国 五彩人物故事图大盘



117



118



119

Lot 118

A Chinese hat stand,
c.1900, of cylindrical form, painted with
a literatus in a garden with two attendants,
a blossoming tree and flowers to their sides,
inscribed and dated year of Jiawu,
27.7cm high
£200 - 300

约1900年 浅绛彩诗文高士图帽筒

Lot 119

A Chinese tea glazed vase,
of baluster form, painted in gilt with *taotie*
masks surrounded by stylised *chilion* above
a false gadroon border, the neck with
banana leaves above a key fret border, *six*
character Qianlong mark,
22.5cm high
£300 - 400

茶叶末釉描金饕餮纹瓶
《大清乾隆年制》描金篆书款

Lot 120

Five Chinese blue and white bird
feeders,
late Qing dynasty/early Republic period,
painted with flowers, landscapes or Buddhist
lions,
3.1 to 4.6cm, and
a green glazed example,
5cm (6)
£200 - 300

晚清民国 鸟食罐 一组六件



120

Lot 121

A Chinese porcelain plaque,
painted with carps amongst reeds, *inscribed*
and dated 1964,
33.8 x 20.6cm
£300 - 400

浅绛彩鱼藻纹瓷板



121

Lot 122

A Chinese famille rose ewer and cover,
late Qing dynasty/early Republic period, the
pear-shaped body painted with a literatus
seated in a garden or riding a donkey, an
attendant to his side, the domed cover with
a ball finial,
19.8cm high (2)
£150 - 250

晚清民国 粉彩高士图酒壶



122

Lot 123

A Chinese famille rose vase, c.1900, of tapering form, painted with Fu, Lu and Shou surrounded by boys and bats, 40.5cm high, wood stand (2)
£300 - 400

清约1900年 粉彩三星高照图瓶 连木底座

Lot 124

A Chinese famille verte planter, of circular form with everted rim, the centre painted with Shoulao seated with a *ruyi* sceptre in his left hand, an attendant and a deer by his side, the rim with butterflies in oval panels surrounded by flowers, 33cm diameter
£200 - 300

五彩寿星图盆

Lot 125^A

A Chinese blue and white vase, of hexagonal form, painted with mountainous landscapes in shaped panels, surrounded by *chilong* amongst scrolling flowers, *six character Qianlong* mark, 57.5cm high
£300 - 500

青花浅绛彩山水图六方瓶
《大清乾隆年制》青花篆书款

^A Temporary Admission rules apply - please see page 109 for further details.



123



124

Lot 126

A Chinese famille verte vase, 20th century, of mallet form, painted with two dragons chasing a flaming pearl amongst clouds above waves, *six character Guangxu* mark in red, 20cm high
£200 - 300

二十世纪 双龙抢珠纹摇铃尊
《大清光绪年制》矾红楷书款

Lot 127

A Chinese famille rose vase, of ovoid form with flared mouth, painted with boys at play in a garden, the reverse with a fruiting pomegranate tree, the neck with scrolling lotus, bats and *shou* characters against a turquoise ground, loop handles, *six character Daoguang* mark, 32cm high
£500 - 800

粉彩婴戏图双耳瓶
《大清道光年制》矾红篆书款



125



126



127



128



129

Lot 128^

A Chinese famille rose vase, of shaped rectangular form, painted with pomegranates and flowers, the sides with inscriptions, *six character Jiaqing mark*, 14.3cm high
£300 - 500

花果图诗文四方瓶 《大清嘉庆年制》 矾红篆书款

^ Temporary Admission rules apply - please see page 109 for further details.

Lot 129

A Chinese blue and white stem bowl, early 20th century, of lobed circular form on a raised high foot, painted with sprigs of flowers, pomegranates, finger citron and peaches above precious objects in moulded false gadroon borders, 18cm diameter
£200 - 300

二十世纪初 青花三多纹高足碗



130



131

Lot 130

A Chinese blue and white jar, early 20th century, of ovoid form, painted with blossoming prunus against a blue ground, *six character Kangxi mark*, 25cm high
£100 - 150

二十世纪初 青花冰梅纹罐 《大清康熙年制》 青花楷书款

Lot 131

A Chinese blue and white brush pot, 19th-20th century, of cylindrical form with three applied mask to foot rim, painted with boys at play in a garden at different pursuits, 21cm high
£1,200 - 1,800

十九至二十世纪 青花百子图笔筒

Lot 132

A Chinese porcelain vase, 19th-20th century, of tapering baluster form with flared mouth, all under a crackled glaze, *six character Yongzheng mark*, 33.5cm high
£400 - 600

十九至二十世纪 仿歌釉开片撇口瓶 《大清雍正年制》 青花楷书款



132



133



134



135

Lot 133

A Chinese famille verte vase,
Republic period (1912-1949), of baluster form, painted with
a basket of flowers in shaped panels against an iron-red
ground painted with scrolling flowers,
44cm high
£100 - 150

民国 五彩花篮纹撇口瓶

Lot 134

A Chinese famille rose group,
early 20th century, of Zhong Kui (vanquisher of ghosts and
evil beings) in a long red robe with a red beard, holding a ruyi
sceptre in his right hand, a boy kneeling on a vase by his side,
offering a pomegranate and a bat in his raised arms,
38.5cm high
£300 - 400

二十世纪初 粉彩钟馗立像

Lot 135

A pair of Chinese wucai vases,
20th century, of cylindrical form, painted with ladies and boys
at play in a garden, six character Yongzheng mark,
26cm high (2)
£100 - 150

二十世纪 五彩婴戏图瓶 《大清雍正年制》青花楷书款 一对

Lot 136

A Chinese famille rose vase,
of pear shape on a tall circular foot and with a flared mouth,
a reticulated double-walled body, the outer with pierced
roundels decorated with a blossoming tree by a fence against
a yellow sgraffito ground with blue scrolling lotus, the
shoulder marked with a sexagenary cycle in shaped panels,
the neck with scrolling foliage against a puce ground with
elephant handles, the inner tube painted with bats amongst
clouds, six character Qianlong mark,
37.5cm high
£800 - 1,200

粉彩开光花卉纹象耳转心瓶 《大清乾隆年制》青花楷书款



136

CHINESE JADE

137-172



138



137

Lot 137

A Chinese hardstone incense burner and cover,
20th century, of globular form on three shaped legs, mask and tongue handles with looped rings, the cover with a Buddhist lion knob, the stone of a celadon tone,
21cm high (2)
£600 - 800

二十世纪 三足连盖香炉

Lot 138

A Chinese jade carving,
of a luohan standing on clouds with his arms around a staff with a double gourd tied to the top, in a long robe forming natural folds, the stone of greyish white tone,
19.5cm high
£8,000 - 10,000

玉雕罗汉立像



139

Lot 139

A Chinese jade pendant,
Qing dynasty (1644-1911), of a shaped rectangular panel carved with a boy, attached with a silver pendant of a *huang* and double fish, and another jade pendant of a basket of flowers, overall 9cm long
£150 - 250

清 镂雕童子玉佩

Lot 140

A pair of Chinese lapis lazuli boxes and covers,
naturalistically modelled in the shape of two recumbent rabbits with engraved fur, each side carved with *ruyi* shaped clouds,
10cm long (4)
£400 - 600

青金兔形盖盒 一对

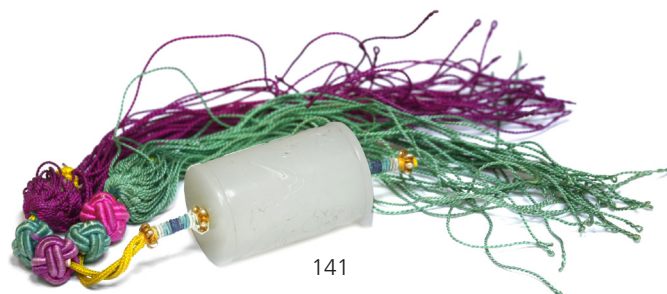
Lot 141

A Jade pendant,
of cylindrical form, carved with a warrior in full armour playing with his spear, inscription to the other side with signature of Zigang, the stone of white tone attached with pink and green tassels with seed pearls,
jade 2.9cm high
£200 - 300

白玉人物诗文图子冈款勒子



140



141



142

Lot 142

A Chinese jade pendant, carved with a dragon and a tiger over an archaic axe decorated with scrolls, the stone of yellow tone with inclusions, 7.4cm high
£500 - 800

黄玉斧形珮



143

Lot 143

A Chinese jade vase, Ming dynasty, 17th century, in the shape of a tree trunk, entwined with blossoming prunus, bamboo and pine tree, *lingzhi* to the foot, the stone of a greyish green tone, 10.7cm high
£3,500 - 4,000

明十七世纪 青玉雕岁寒三友图花插

Lot 144

A Chinese jade carving, 18th century, of a Buddhist lion holding a brocade ball and a ribbon with its paws, a smaller pup clambering on its back, fur engraved with details, 7cm long, wood stand (2)
£6,000 - 8,000

Provenance: The collection of the late Lady June Horlick.

清十八世纪 玉雕太狮少狮摆件连木底座



144



145



147



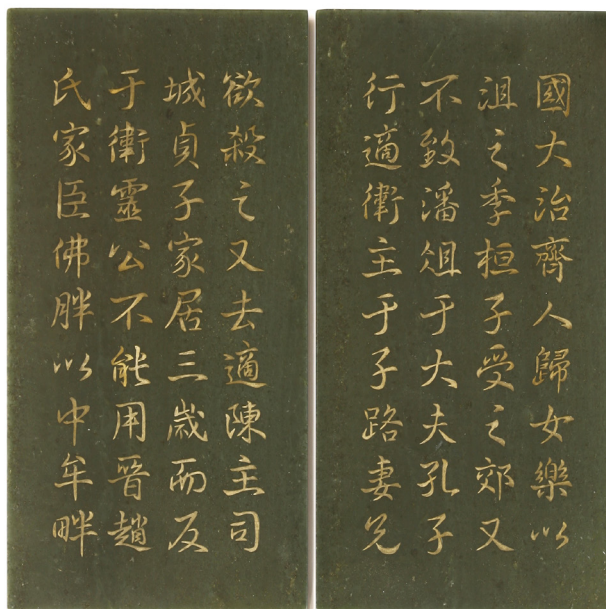
148



149



150



146

Lot 145

A Chinese soapstone carving, of a luohan seated in long robes engraved with *shou* roundels and florets, with a rosary in his left hand and a *qilin* on his right knee, maker's mark *Yuxuan* to the back, 5.5cm wide, wood stand (2)

£600 - 800

寿山石雕罗汉坐像 连木底座

Lot 146

Two Chinese spinach jade plaques, each engraved in gilt with scripts from the 'Analects' by Confucius, the underside engraved with the number six and seven in Chinese, 21 x 10cm (2)

£700 - 900

碧玉《论语/序说》册页 一组两件

Lot 147

A Chinese jade pendant, Ming dynasty (1368-1644), of a cockerel, 4.8cm long

£300 - 500

明 玉雕公鸡吊坠

Lot 148

A Chinese jade pendant, carved with a stylised *bi* disc entwined with a *chilong* and a phoenix, the disc with archaic scrolls, the stone of greyish green, 9.5cm long

£500 - 800

青灰玉雕龙凤珮

Lot 149

A Chinese jade carp, along with a lotus flower and leaf, 5.8cm long

£200 - 300

玉雕荷叶鲤鱼珮

Lot 150

A Chinese jade archer's ring, carved in low relief with a dragon-horse carrying a bundle of scrolls tied to its back above waves, a four character inscription in archaic font reading 'Long Ma Fu Tu' (dragon-horse carrying maps, a description of bravery and wit), the stone of pure white tone, 2.8cm diameter

2.4cm high

£300 - 500

白玉龙马负图扳指



151

Lot 151

A Chinese jade carving,
of two boys each with a *ruyi* sceptre and
millets in their hands, on the back of an
elephant, the stone of white tone,
11.5cm long
£1,000 - 1,500

玉雕童子洗象摆件

Lot 152

A Chinese agate vase,
in the shape of a gnarled tree trunk surrounded by a fruiting
peach branch, *lingzhi*, and rocks,
11cm high, with spinach jade stand, similarly decorated on
three bracket feet (2)
£1,000 - 1,500

玛瑙雕多福多寿纹花插

Lot 153

A Chinese soapstone carving,
of a Buddhist lion seated amongst clouds, a pup to its side
clambering on its back, the stone of amber tone, *engraved
maker's mark*,
6.7cm long, accompanied with a boxwood stand carved
with pups amongst rocks and a pierced cover with scrolling
lotus (3)

£1,500 - 2,000

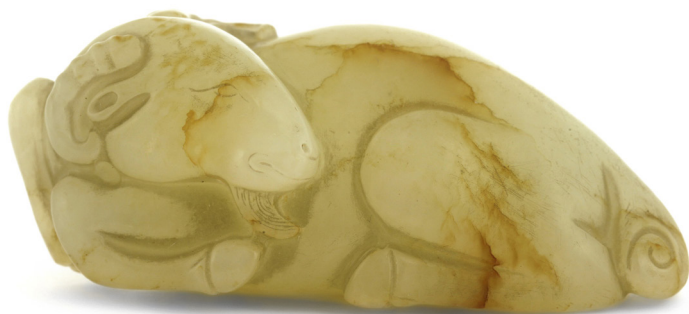
寿山石雕太狮少狮摆件 连木盖盒



152



153



154

Lot 154

A Chinese jade carving, of a recumbent ram, turning its head to the back, the stone of a greyish green tone with some russet staining, 6.5cm long

£1,000 - 1,500

青白玉卧羊把件



155

Lot 155

A Chinese jade plaque, of rectangular form, carved with a landscape of a pavilion and pine trees above a river, the other side with a literatus travelling amongst pine trees, his attendant following him with a *qin* in his arms, inscribed with a poem and signed Zigang, the stone of white tone, 6cm long

£1,000 - 1,500

白玉人物诗文图子冈牌

Lot 156

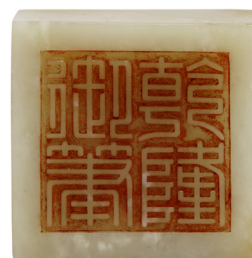
A Chinese jade seal, Qianlong or later, of square form, the top carved with two *chilong* above waves, the base with a four-character inscription in seal script in intaglio, 'Qianlong Yubi' (In the Imperial Hand of Qianlong), some details stained to resemble excavated jade, the stone in a greyish white tone, 5.5cm square 4.5cm high

£8,000 - 10,000

清乾隆或更晚 玉雕螭龙纹《乾隆御笔》印章



156



156 mirrored mark



157



158



159



160

Lot 157

A Chinese jade carving, of a bodhisattva seated on the back of a horse, his right hand raised in vitarka mudra, all on a rectangular plinth, 10cm high

£2,500 - 3,500

玉雕菩萨骑像

Lot 158

A Chinese jade carving, Qing dynasty (1644-1911), of Shoulao standing with *lingzhi* in his right hand, a boy by his side carrying a string of coins, the stone of a greyish white tone, 5.2cm high

£150 - 250
清 青白玉寿星童子把件

Lot 159

A Chinese jade carving, Ming dynasty (1368-1644), of a recumbent Buddhist lion, turning its head with a *lingzhi* in its mouth, its fur engraved in details, the stone of a white tone, 6.5cm long

£250 - 350
明 玉雕佛狮衔灵芝把件

Lot 160

A Chinese jade carving, Qing dynasty (1644-1911), of a boy seated with a stem of flowers in his hands, a dog lying by his side, 4.8cm long, wood stand (2)

£100 - 150

清 玉雕童子摆件 连木底座



161

Lot 161

A Chinese jade box, of circular form, the centre carved with a *shou* roundel with lotus petal border, surrounded by archaic motifs, the stone of greyish green tone with inclusions, 12.7cm diameter
£5,000 - 8,000

玉雕寿字纹圆盖盒



162

Lot 162

A Chinese jade mythical beast, recumbent with a smaller pup clambering on its back, its fur engraved in details, the stone of grey with inclusions, 8.5cm long
£4,000 - 6,000

玉雕神兽把件



163

Lot 163

A Chinese jadeite carving, of a stem of *lingzhi* surrounded by bats, the stone of green and yellow tone, 11.5cm long, wood stand (2)
£100 - 200

三色翡翠巧雕蝙蝠如意摆件 连木底座



164

Lot 164

A Chinese jade carving, Qianlong (1736-1795), carved with He He Erxian, each steering a tree trunk raft with a basket of lotus through tumultuous waves, all in a mountainous landscape with *lingzhi* and peach trees to the side, the back engraved with lines suggesting rocks and waves,

13.2cm long, pierced wood stand with prunus with rocks (2)

£4,000 - 6,000

清乾隆 玉雕和合二仙乘槎图山子 连木底座



165

Lot 165

A Chinese jade brush pot, of shaped tapering square form on four *ruyi* head feet, each side carved with a mountainous landscape, either with a literatus, a woodcutter, or a farmer with his buffalo,

16.5cm high

£10,000 - 12,000

玉雕山水图笔筒



166



167



168

Lot 166**A Chinese jade carving,**

Qianlong (1736-1795), of oval form, carved in low relief with literati greeting each other under a pine tree in a mountaneous landscape, the stone in a milky white tone,

13.5cm long

£300 - 500

清乾隆 高士图玉瓦子

Lot 167**A Chinese jade 'twin-fish' dish,**

of circular form on a short circular foot, the centre carved with a pair of addorsed carp in relief, the stone of yellow tone,

10cm diameter

£600 - 800

玉雕双鱼纹碟

Lot 168**A Chinese jade box and cover,**

in the shape of a belt buckle, decorated with entwined *chilong* in relief, the stone of yellow tone,

6.2cm long (2)

£600 - 800

玉雕螭龙纹盖盒

Lot 169**A Chinese jade ghanta,**

the dome carved with lotus petals and Tibetan sanskrits above vajra and dharmachakra motifs between beaded borders, the handle with a half-vajra finial above two addorsed Buddha's heads,

21cm high

8.4cm diameter

£7,000 - 8,000

The ghanta and vajra are indispensable ritualistic instruments according to Tibetan Buddhism, with the ghanta representing the feminine attribute of wisdom and the vajra representing the male attribute of skilful means. It is the union of the attributes that ultimately leads to enlightenment.

A similar example in the Palace Museum, Beijing, is illustrated in 'The Complete Collection of Treasures of the Palace Museum, Jewellery (III)', Volume 42, p.134, no.112.

玉雕金刚铃



169

Lot 170

A Chinese jade Buddha,
seated cross-legged with overlapped hands resting
on his lap, wearing a long robe and a beaded necklace,
17.5cm high
£5,500 - 6,000

玉雕释迦牟尼坐像



170

Lot 171

A Chinese soapstone carving,
depicting the story of Sima Guang who rescued
his panicking playmate from a vat of water by
calmly smashing the pot,
38.5cm long
£1,500 - 2,000

寿山石雕司马光砸缸摆件



171

Lot 172

A Chinese jade carp,
Ming dynasty (1368-1644), with a millet in
its mouth above a lotus leaf, details incised,
the stone of white tone with some inclusions,
6cm long
£1,200 - 1,500

明 玉雕鲤鱼珮



172

CHINESE SILVER, CLOISSONNÉ AND METALWARE

173-210



173



Lot 173

A Chinese bronze vase,
late 19th century, of pear form with flared mouth, the shoulder with archaic *taotie* against a key fret ground border, mask and tongue handles, 25.5cm high, and
a bronze censer,
of circular form on three elephant-shaped feet, an archaic border of stylised *chilong* below the flared rim, elephant handles, *four character Xuande mark*, 26.8cm long (2)
£100 - 150

清十九世纪末 铜铸饕餮纹双耳瓶 及 仿古螭龙纹象耳三足炉 《宣德年制》篆书模款 一组两件



174

Lot 174

A Chinese bronze incense burner and cover,
c.17th century, of rectangular form on four tall cylindrical feet, with an archaic border, the pierced cover with scrolling lotus, the knob with a mythical beast, 23.5cm high (2)
£1,000 - 1,500

约十七世纪 铜铸仿古纹冲耳四足鼎炉

Lot 175

A Chinese bronze hu,
of globular form on a raised foot with flared mouth, decorated with symmetrical archaic designs inlaid with gold and silver, mask and hoop handles, 16cm high
£1,200 - 1,500

铜错金银铺首耳壶

Lot 176

A Chinese bronze ritual pouring vessel (gong),
cast with archaic stylised dragons on each side against *leiwen* grounds below a key fret border, mask and tongue handle, 16cm long
£1,000 - 1,500

仿古螭龙纹觥



175



176



177

Lot 177

A Chinese gilt bronze incense burner, possibly 17th century, of squat form on a short circular base, with a flared mouth, two handles, *six character Xuande mark*, 20.5cm wide
£200 - 300

十七世纪(可能) 铜鎏金双耳香炉 《大明宣德年制》 楷书模款

Lot 178^

A Chinese gilt bronze pricket stick, with two hardstone dishes supported by a stem on an everted circular base, on three shaped legs with paw feet cast with foliage, all standing on a ring forming the base, *four character Qianlong mark*, 25.5cm high
£6,000 - 8,000

铜鎏金花卉纹烛台 《乾隆年制》 楷书款

^ Temporary Admission rules apply - please see page 109 for further details.

Lot 179

A Chinese bronze incense burner, 17th century or later, of squat form on three short feet, *six character Xuande mark*, 14cm diameter
£2,500 - 3,500

十七世纪或更晚 铜铸冲天耳三足香炉 《大明宣德年制》 楷书模款

Lot 180

A Chinese parcel-gilt bronze censer, of cylindrical form on three *ruyi* head feet, moulded with blossoming magnolia, peony and prunus branches against a diapered ground, 9cm high
£3,000 - 4,000

铜鎏金锦地花卉纹香炉



178



179



180



181

Lot 181

A Chinese gilt bronze ritual bell (bianzhong), heavily cast in barrel form, surmounted by a robust double-headed dragon handle, the bulging side with two dragons chasing flaming pearls above waves, between two clouds and wave borders, 25cm high
£1,500 - 2,000

铜鎏金蒲牢钮云龙纹编钟



182

Lot 182

A Chinese bronze censer, of squat form, on a short flared foot, Buddhist lion handles, *four character seal mark to the base*, 21.5cm wide
£600 - 800

铜铸铺首耳香炉

Lot 183

A Chinese bronze figure, Ming dynasty (1368-1644), of a Daoist immortal wearing a long robe and a tall hat, seated with both hands held in front of him, wood chair, 25.5cm high (2)
£400 - 500

明 铜铸道教人物坐像



183

Lot 184

A Chinese parcel-gilt bronze incense powder box and cover, 17th century, of circular form with key fret borders, the cover cast with blossoming prunus against a diapered ground, *four character Hu Wenming mark*, 7.2cm diameter (2)
£5,000 - 8,000

For a similar item, please see Bonham's, London, New Bond Street, 11 November 2010, lot 151.

十七世纪 铜鎏金锦地梅花纹墨盒
《胡文明制》篆书款



184 mark



184

Lot 185

A Chinese bronze water dropper,
19th century, in the form of an incense burner, of tapering
rectangular form, two elephant handles, *four character Xuande*
San Nian mark to base,
7.5cm long, and
an associated metal ladle (2)
£80 - 120

清十九世纪 铜铸香炉式水盂 《宣德三年》篆书款 连小勺



185

Lot 186

A Chinese gilt bronze incense burner,
possibly 17th century, of squat circular form with a flared mouth,
on three elephant feet, a false gadroon border to the neck, with
ruyi handles, *six character Xuande* mark,
15.5cm long
£300 - 500

十七世纪(可能) 铜鎏金如意耳三足香炉 《大明宣德年制》楷书款



186

Lot 187

A Chinese bronze bodhisattva,
seated cross-legged on a lotus throne, holding a *ruyi* sceptre in his
right hand and a small cup in his left hand, wearing an elaborate
headdress and beaded jewellery,
35cm high (2)
£800 - 1,200

铜漆金菩萨坐像

Lot 188

A Chinese gilt bronze bodhisattva,
15th century, seated cross-legged on a double lotus pedestal,
wearing beaded jewellery inlaid with turquoise and ankle-length
dhoti, a pair of his hands in front of his chest forming the anjali
mudra, another pair of hands raised on each side, holding a lotus
or a rosary,
13.5cm high
£300 - 500

明十五世纪 铜鎏金四臂观音坐像



186 mark



187



188



189



190



191

Lot 189

A Tibetan gilt bronze Shakyamuni, 15th-16th century, seated cross-legged on a double lotus pedestal, wearing a long robe with engraved borders, his hands in bhumisparsha mudra, 13cm high
£300 - 500

十五至十六世纪 西藏铜鎏金释迦牟尼坐像

Lot 190

A Tibetan gilt bronze Kalacakra statue, 18th-19th century, of Chakrasamvara and Vajravahni locked in a passionate embrace in front of flames, his right leg straight, his left bent, both pressing on a figure, possibly Kalaratri and Yama kneeling on a lotus platform, holding Vajravahni in his lap with her left leg wrapped around his waist, his arms outstretched surrounding the couple like a golden aura, each holding a Tibetan Buddhist attribute, 6cm high
£100 - 150

十八至十九世纪 西藏铜鎏金时轮金刚立像

Lot 191

A Chinese gilt bronze bodhisattva, seated crossed-legged on a double lotus pedestal, wearing an elaborate headdress and beaded jewellery, his right hand raised with a sword over his head, 16.5cm high
£300 - 500

铜鎏金绿度母坐像



192

Lot 192

A Chinese gilt bronze head of Buddha,
with curled hair in blue flowing over the domed ushisha
and terminating before the ears,

36.5cm high

£2,000 - 3,000

铜鎏金佛头

Lot 193

A Tibetan gilt bronze stupa,
heavily cast, raised on a waisted pedestal cast, with two
Buddhist lions in shaped panels surrounded by scrolls on
each side, the drum decorated with masks and strings
of beads with a small opening containing a Shakyamuni
Buddha in bhumisparsa mudra, the tiered spiral carrying
the canopy flanked by trailing garlands and capped by
the sun-moon symbol,

45.5cm high

£2,000 - 3,000

铜鎏金佛塔



193

Lot 194

A Chinese bronze Guanyin,
seated on a lotus pedestal on the back of a Buddhist lion,
wearing an elaborate headdress and beaded jewellery,

32cm high

£700 - 900

铜漆金狮吼观音坐像



194

Lot 195

Spare lot



196



197



199

198

**Lot 196**

A Chinese silver bowl, Republic period (1912-1949), of circular form on a circular foot, engraved with a pheasant standing on a blossoming branch and a poem by the Song poet Zhang Wei appraising the Chrysanthemum Spring, dated Summer of Renzi (1912), signed Shao Kang, stamped marks 'Tianjin Wuhua', 'Zuwen', 'Hou' and 'Yong', 9.1cm diameter, 132.3g
£150 - 250

民国 花鸟诗文银碗

近来湖上风光改，古迹三贤亦就迁。独有菊泉能定力，岁寒坚守此山前。

壬子夏日 绍康 刻

《天津物华》《足纹》《厚》《湧》模款

Lot 197

A Chinese silver censer, 19th century, of globular form on three shaped legs with masks, engraved with Buddhist emblems, mask and ring handles, the domed cover pierced with florets, knob in the shape of a vajra, 16.5cm, 199.6g (2)
£200 - 300

清十九世纪
银制八宝纹三足香炉

Lot 199

A Chinese Canton enamelled bowl and cover, 19th century, of tapering circular form with rounded rim, painted with scrolling lotus and other flowers against a purple ground between scroll borders, the cover similarly decorated, 11.9cm diameter (2)
£100 - 150

清十九世纪 铜胎画珐琅紫地缠枝莲纹盖碗

Lot 200

A Chinese cloisonné ruyi sceptre, 19th-20th century, the head with a moulded bat holding two coins amongst clouds, the handle with scrolling lotus and double fish against a blue ground, the reverse with bats amongst clouds, 47.8cm long
£500 - 700

十九至二十世纪 铜胎掐丝珐琅福在眼前纹如意

Lot 197

A Chinese gold censer and cover, Qing dynasty (1644-1911), of circular form on a short circular foot, engraved with blossoming prunus and a poem by the Yuan dynasty poet, Wang Mian, appraising prunus, the cover pierced with scrolling lotus, tested as approximately 18ct gold, 5.5cm diameter, 67.1g (2)
£1,000 - 1,500

清 梅花诗文金香薰

忽然一夜清香发，散作乾坤万里春



200

**Lot 201**

A Chinese cloisonné screen,
of disc form, enamelled with deer by
a river in a mountainous landscape,
inscribed with a poem, the reverse
similarly decorated with cranes,
50.5cm diameter,
on a wood stand,
pierced and carved with scrolling lotus,
overall 95.5cm high (2)
£6,000 - 8,000

铜胎掐丝珐琅鹿鹤同春图桌屏



Lot 202

A Chinese cloisonné vase, of tapering baluster form, with a long neck, enamelled with bats and *shou* roundels against a blue key fret ground, applied with a bronze dragon entwined around the shoulder chasing a flaming pearl, four character Qianlong mark, 50cm high
£5,000 - 8,000

铜胎掐丝珐琅锦地龙纹长颈瓶 《乾隆年制》楷书款



203

Lot 203

A Chinese enamelled bronze vase, of shield-shaped form, painted with peony, peaches and bats against a yellow ground, the shoulder mounted with mythical beasts, the neck with relief scrolls below a galleried rim, four character Yongzheng mark, 20.5cm high
£2,500 - 3,500

黄地铜胎画珐琅富贵福寿纹瓶 《雍正年制》楷书款

Lot 204

A Chinese enamelled bronze bowl and cover, of lobed form, painted with phoenixes and peony between ruyi head and key fret borders against a yellow ground, the cover similarly decorated, four character Kangxi mark, 11.2cm diameter (2)
£1,000 - 1,200

黄地铜胎画珐琅凤凰牡丹纹花口盖碗 《康熙御制》楷书款



204



205

Lot 205

A Chinese enamelled bronze bowl and cover, of squat form and lobed flat rim, painted with bats amongst scrolling lotus between ruyi head and key fret borders, all against a yellow ground, the underside of the rim painted with chilong on a blue ground, the domed cover with a spear knop, similarly decorated with roundels of chilong, four character Qianlong mark, 15cm high (2)
£1,000 - 1,500

黄地铜胎画珐琅缠枝莲纹花口盖碗 《乾隆年制》楷书模款



206



207

Lot 206

A Chinese Canton enamelled milk jug and tray, Qianlong (1736-1795), the milk jug of pear shape, decorated with peony and other flowers in shaped panels, the cover with a spear finial, 11.5cm high, the tray of oval form, similarly decorated with a butterfly and peony, 16.4cm long, and

a box,

Republic period (1912-1949), of shaped rectangular form, painted with Eight Daoist Emblems amongst pomegranates, peaches, finger citrons and other flowers and fruits, *six character Qianlong mark to base, lid missing*, 15.6cm long (4)

£500 - 800

清乾隆 铜胎画珐琅花卉纹牛奶罐及托盘
连 民国 铜胎画珐琅暗八仙纹盒 一组三件

Lot 207

A pair of Chinese cloisonné bowls and covers, early 20 th century, enamelled with scrolling lotus in relief against a gilt ground, the shoulders with a *ruyi* head border, spear finials to covers,

18cm diameter, wood stands (6)

£150 - 250

二十世纪初 铜胎掐丝珐琅缠枝莲纹盖碗
连木底座 一对

Lot 208

A Chinese cloisonné ruyi sceptre, inset with white jades inlaid with Fu, Lu and Shou in hardstones, bone and mother-of-pearl, the handle enamelled with Eight Buddhist Emblems against a blue ground, *four character Wanli mark*, 48cm long

£400 - 600

铜胎掐丝珐琅嵌百宝福禄寿纹如意



208

**Lot 209**

A pair of Chinese cloisonné incense burners, each in the shape of a crane standing on rocks above waves, with a fruiting peach branch in its beak, a smaller crane by its side looking up, their feathers moulded in details, 142 and 143cm high (2)

£9,000 - 15,000

铜胎掐丝珐琅鹤形香薰 一对



Lot 210[^]

A Chinese cloisonné ritual wine vessel (lei),
of ovoid form on a flared circular foot, enamelled with *taotie* masks amongst key
frets, applied with archaic bronze studs and ornaments, *four character Qianlong*
mark,

45.5cm high

£7,000 - 9,000

铜胎掐丝珐琅饕餮纹罍 《乾隆年制》楷书刻款

[^] Temporary Admission rules apply - please see page 109 for further details.

CHINESE WORKS OF ART

211-288



211

Lot 211

A Chinese ivory part chess set, late 19th century, the unstained pieces carved as Western figures, the stained pieces as Oriental figures, all on raised circular bases, unstained king 10.4cm high (28)

£100 - 150

清十九世纪末 象牙雕国际象棋



212

Lot 212

A Chinese ivory compass, 19th century, of fan shape, carved with dragons chasing a flaming pearl above waves, opening to reveal a compass and a secret chamber, fastened with a metal band, 10cm long, and an ivory meteor hammer, 19th century, in the shape of a spiked ball, 4cm long (2)

£200 - 300

清十九世纪 象牙雕云龙纹指南针 及 球形坠 一组两件



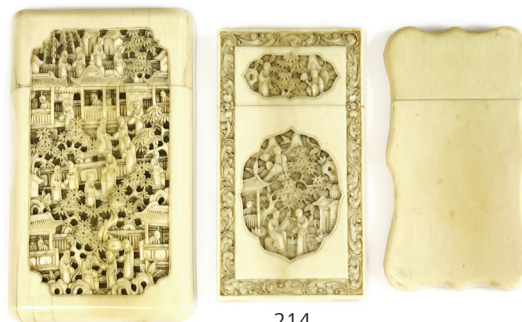
213

Lot 213

A pair of Chinese ivory vases, late Qing dynasty, of tapering baluster form, deeply carved with warriors on horseback at battle in front of a city gate, the neck with figures in shaped panels in relief, surrounded by scrolling lotus above a key fret border to the shoulder, *chilong* and ring handles, one with a cover carved with a *chilong* standing on a chrysanthemum, 20.3 and 24.5cm (2)

£300 - 400

清晚期 象牙雕人物故事图盖瓶 一对



214

Lot 214

Three Chinese Canton ivory card cases, 19th century, one carved with figures, trees and pavilions in a garden in shaped panels, monogrammed in an oval cartouche, 9.8cm, another, with figures in a garden in shaped panels, all within a scroll border, the reverse plain, 8.5cm, and a plain example with shaped border, 8.4cm (3)

£250 - 350

清十九世纪 广东制象牙雕名片盒 一组三件



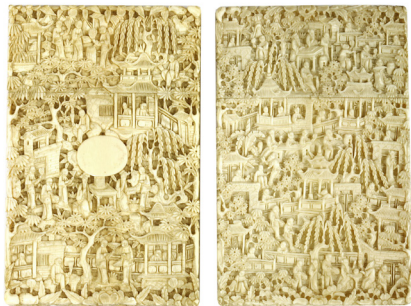
215

Lot 215

Two Chinese Canton ivory card cases, 19th century, one carved with figures in long robes seated on a bench, in a boat or a pavilion, surrounded by bamboo, willow, pine and other trees in a garden, 11.5cm, and another, similarly decorated, 11.5cm (2)

£250 - 350

清十九世纪 广东制象牙雕庭院人物图名片盒 一组两件



216

Lot 216

Two Chinese Canton ivory card cases, 19th century, one carved with two literati playing go in the garden, surrounded by other figures amongst trees and pavilions, a vacant oval cartouche to the centre, 11.4cm, and another with figures seated by tables playing go or *qin*, talking and drinking in a garden, 11.4cm (2)
£250 - 350

清十九世纪

广东制象牙雕庭院人物图名片盒 一组两件



217

Lot 217

Two Chinese Canton ivory card cases, 19th century, one carved with figures holding an umbrella or carrying a yoke, along with other figures, trees and pavilions in a garden, 10.7cm, and another with figures in a garden, 10.7cm (2)
£200 - 300

清十九世纪

广东制象牙雕庭院人物图名片盒 一组两件



218

Lot 218

Two Chinese Canton ivory card cases, 19th century, carved with numerous figures, trees and pavilions in a garden, 10.6 and 10.7cm (2)
£200 - 300

清十九世纪

广东制象牙雕人物故事图名片盒 一组两件



219

Lot 219

Two Chinese Canton ivory card cases, 19th century, one deeply carved with figures seated in a garden in a shaped panel, surrounded by flowers against a diapered ground, the reverse with figures in a garden, 10.7cm, and another with numerous figures, trees and pavilions in a garden, 10.7cm (2)
£200 - 300

清十九世纪

广东制象牙雕庭院人物图名片盒 一组两件



220

Lot 220

Two Chinese Canton ivory card cases, 19th century, one of rectangular form, carved with figures in a landscape with trees, rocks, birds and rivers within a dotted border, the cover carved with rams or dogs, the sides with bats amongst clouds, 9.7cm high, and another of shaped rectangular form, deeply carved with a dragon chasing a flaming pearl amongst clouds, the back with figures in shaped panels, 8.4cm high (2)
£400 - 600

清十九世纪

广东制象牙雕庭院人物图名片盒及云龙纹名片盒 一组两件



221

Lot 221

Two Chinese Canton ivory card cases, 19th century, one deeply carved with figures surrounding a round table in a garden in a shaped panel, surrounded by a floral border, 11.5cm, and another with figures in a garden in shaped panels, 11.4cm (2)
£200 - 300

清十九世纪

广东制象牙雕庭院人物图名片盒 一组两件



222

223

224

Lot 222

Three Chinese Canton ivory card cases, 19th century, carved with figures, trees, boats and pavilions in a garden, two with a vacant oval cartouche, 10.7, 10.8 and 11.5cm (3)

£300 - 500

清十九世纪 广东制象牙雕庭院人物图名片盒 一组三件

Lot 223

Two Chinese Canton ivory card cases, 19th century, one carved with figures, trees and pavilions in a shaped panel surrounded by a floral border, a vacant oval cartouche to the centre, 11.4cm, and another with figures in a garden in shaped panels, 11.4cm (2)

£200 - 300

清十九世纪 广东制象牙雕庭院人物图名片盒 一组两件

Lot 224

Two Chinese Canton ivory card cases, 19th century, one carved with figures in a garden within a cross-shaped panel surrounded by floral border, 10.7cm, and another with flowers in a cross-shaped panel, a vacant oval cartouche to the reverse, swing cover, 9.3cm (2)

£200 - 300

清十九世纪 广东制象牙雕十字架纹名片盒 一组两件



225

226

227

Lot 225

Two Chinese Canton ivory card cases with swing covers, 19th century, one carved with an old man hunting in a garden, pointing his arrow at a monkey on the tree, monogrammed in an oval cartouche, the reverse with an officer talking to a man with a bird cage by the town gate, all against a diapered ground, 11.6cm, and

another with figures, trees and pavilions in a garden, 9.5cm (2)

£250 - 350

清十九世纪 广东制象牙雕庭院人物图名片盒 一组两件

Lot 226

Two Chinese Canton ivory card cases, 19th century, one carved with birds and flowers in relief, the other side with morning glories and irises, a bird above, 10.7cm, and another attached with an oval blackwood plaque carved with figures in a garden, floral border, 10.8cm (2)

£200 - 300

清十九世纪 广东制象牙雕名片盒 一组两件

Lot 227

Three Chinese Canton ivory card cases, 19th century, carved with figures, trees and pavilions in a garden, 9.4, 9.6 and 9.7cm (3)

£250 - 350

清十九世纪 广东制象牙雕庭院人物图名片盒 一组三件



228

Lot 228

Three Chinese Canton ivory card cases,
19th century, carved with figures, trees and pavilions in a garden,
9.6cm each (3)

£300 - 500

清十九世纪 广东制象牙雕庭院人物图名片盒 一组三件



229

Lot 229

Three Chinese Canton ivory card cases,
19th century, carved with figures, trees and pavilions in a garden,
one with a monogrammed cartouche, one dyed in red,
8.3, 8.9 and 9.6cm (3)

£250 - 350

清十九世纪 广东制象牙雕庭院人物图名片盒 一组三件



230

Lot 230

Three Chinese Canton ivory card cases,
19th century, all with figures, trees, and pavilions in a garden,
8.2, 8.4 and 8.5cm (3)

£250 - 350

清十九世纪 广东制象牙雕庭院人物图名片盒 一组三件



231

Lot 231

A Chinese Canton ivory card case,
19th century, carved with
a lady holding a vase
under a blossoming tree
in a garden, a deer by her
feet, the reverse with a
lady holding a branch of
flowers, a literatus and a
boy by her side, all against
a diapered ground,
9.6cm

£220 - 250

清十九世纪 广东制象牙雕
庭院人物图名片盒

232

Lot 232

A Chinese Canton ivory card case,
19th century, carved with
numerous figures, trees and
pavilions in a garden,
10.8cm

£220 - 250

清十九世纪 广东制象牙雕
庭院人物图名片盒

233

Lot 233

Three Chinese Canton ivory card cases,
19th century, one carved with numerous figures, trees and
pavilions in a garden,
10.7cm,
another similarly decorated with a vacant oval cartouche and
dragons to the sides,
8cm, and
another carved with Hehe Er Xian below a blossoming tree
against a diapered ground,
8.6cm (3)

£540 - 600

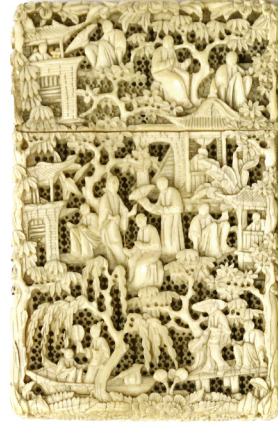
清十九世纪 广东制象牙雕人物故事图名片盒 一组三件



234



235



236



237



238

Lot 234

A Chinese Canton ivory card case, 19th century, carved with numerous figures, trees and pavilions in a garden, 8.5cm
£220 - 250

清十九世纪 广东制象牙雕庭院人物图名片盒

Lot 235

A Chinese Canton ivory card case, 19th century, carved with numerous figures, trees and pavilions in a garden, 8.4cm
£220 - 250

清十九世纪 广东制象牙雕庭院人物图名片盒

Lot 236

Two Chinese Canton ivory card cases, 19th century, one carved with numerous figures, trees and pavilions in a garden, the top with magpies and the bottom with phoenixes, a vacant oval cartouche to the centre, 10.7cm, and another similarly decorated against a diapered ground, a vacant oval cartouche to the top, 11.4cm (2)
£400 - 600

清十九世纪
广东制象牙雕庭院人物图名片盒 一组两件

Lot 237

A Chinese Canton ivory card case, 19th century, carved with figures seated under trees in a garden, all against a diapered ground, 9.5cm
£220 - 250

清十九世纪 广东制象牙雕庭院人物图名片盒

Lot 238

A Chinese Canton ivory card case, 19th century, of shaped rectangular form, deeply carved with a carp turning into a dragon amongst other sea creatures against waves, the other side carved with figures in a garden in a vase shaped panel, a vacant oval cartouche in the centre, 10.6cm
£220 - 250

清十九世纪
广东制象牙雕鱼化龙纹名片盒



239

Lot 239

A Chinese ivory figure, late 18th century, of a standing scholar, wearing a long robe tied at the waist by a rope with long tassels and an elaborate *ruyi* head shaped hat with two tassels on the sides, his right hand raised reaching one of the tassels, a fan in his left hand, all with elements picked out with gilt and pigments, 22.5cm high, wood stand (2)
£1,000 - 1,200

清十八世纪末 象牙人物立像 连木底座



240

Lot 240

A Chinese ivory brush pot, Qianlong (1736-1795), of cylindrical form, deeply carved with the extraordinarily handsome Pan Yue (247-300) seated in a chariot, young women on a balcony and in the street expressing their affection for the young scholar by throwing fruit at him as he passes by, the other side carved with a town gate in a landscape with more women and children coming to take a look at him, 13.2cm high, wood stand (2)
£12,000 - 15,000

The story was recorded in the 'Book of Jin': '(Pan) Yue was handsome in appearance and bearing...When he was young, he often strolled about outside Luoyang, holding a slingshot under the arm. Women who met him all surrounded him by hands and threw fruits in his chariot, so when he returned, his chariot was full of fruits'. Song Geng (2004), 'The Fragile Scholar: Power and Masculinity in Chinese Culture', Hong Kong University Press, p.143-144.

A similar example can be found in the collection of the Metropolitan Museum of Art, Accession Number: 2015.500.6.10. Another platter with the same story was donated by John D Rockefeller Jr in 1960 and can also be found in the collection, Accession Number: 61.200.69.

清乾隆 象牙雕掷果盈车图笔筒



Accession No. 2015.500.6.10.



Accession No. 61.200.69.



241



244



245



242



243

Lot 241**A Chinese kingfisher ornament,**

19th century, in the form of a temple with lotus finial, accompanied by a phoenix on each side supported by the waves spitting from a dragon carp, decorated with kingfisher feathers and gilt, 38cm long

£120 - 150

清十九世纪 点翠头饰

Lot 246**A Chinese wood hanging panel,**

inlaid with birds standing on a blossoming gnarled tree, surrounded by flowers and rocks, in jade, hardstones, lapis lazuli and mother-of-pearl, the top section incised with a poem by Qianlong, all against a lacquered ground,

111.5 x 73cm

£1,500 - 2,000

嵌百宝花鸟图诗文挂屏

Lot 242***A Chinese rhinoceros horn swagger stick,**

19th century, the silver mounted top decorated with figures in a landscape,

74.8cm long, total weight 90g

£300 - 500

清十九世纪 犀角镶银手杖

Lot 243***A Chinese rhinoceros horn walking stick,**

19th century, with a crook handle and a metal ferrule, 90cm long, overall weight 344g

£800 - 1,200

清十九世纪 犀角手杖

Lot 244**A Chinese lacquered box and cover,**

in the shape of a *shou* character, the cover inlaid with peaches and other precious objects in hardstones and mother-of-pearl, amongst sprigs of flowers, all below a dragon and a *Sheng* character, the sides with foliage scrolls, *six character Qianlong mark to base*, 37cm long (2)

£500 - 700

嵌百宝寿字纹漆盒 《大清乾隆年制》楷书款

Lot 245**A Chinese lacquered tea caddy,**

19th century, of rectangular form, painted in gilt against a black ground, with warriors or figures on horses in a garden in shaped panels surrounded by dragons, butterflies and flowers between foliage scroll borders, the interior with a pewter hinged box engraved with two Daoist immortals, ivory ball knob,

27.5 x 20 x 15cm

£100 - 200

清十九世纪 黑地描金开光人物故事图茶叶盒



246



247



248

Lot 247

A Chinese official's hat, with a coral ball finial and a jade tube ornament, above red tassels covering the circular domed top, 30cm diameter, and a wooden bead chaozhu, consisting of 108 wooden beads with spacers and pendant drops in blue glass, 121.5cm long (2)
£500 - 800

珊瑚顶吉服冠 及 木朝珠 一组两件

Lot 248

A Chinese ink stone, 19th-20th century, of rectangular form, smoothly polished with a recessed inkwell below a flat grinding surface incised with a poem by the Tang poet Du Fu (712-770), reading 'Hui Dang Ling Jue Ding, Yi Lan Zhong Shan Xiao' (Try to ascend the mountain's crest, it dwarfs all peaks under our feet), a signature below possibly reads Chen Tan, 18.2cm, wood box and cover (3)
£600 - 800

十九至二十世纪 诗文砚台 连木盒



249

Lot 249

A Chinese white metal sword, Qing dynasty (1644-1911), possibly Tibetan or Mongolian, the scabbard decorated with stylised *chilong* in relief and mounted with turquoise, the handle with a lotus-shaped pommel and the guard decorated with *chilong*, 96cm long
£700 - 1,000

清 西藏或蒙古 嵌松石鞘刀



250



252

Lot 250

A Chinese overlay Peking glass jar and cover, Qianlong (1736-1795), of tapering form, decorated in red with a *qilin*, a dragon and other mythical beasts with precious objects above waves, the shoulder with a *ruyi* head border, the cover with a bat amongst clouds, all against a yellow ground, 15cm high (2)
£1,000 - 1,200

清乾隆 黄地套红料海水异兽纹盖罐

Lot 251

A pair of Chinese Peking glass cups, Qing dynasty (1644-1911), of bell form on a short circular foot with flared mouth, in sapphire blue, four character incised Qianlong mark to base, 6.5cm high (2)
£3,500 - 4,500

清 蓝料杯 一对



251

**Lot 252**

A Chinese lacquered papier-mâché vase and cover, 19th century, of tapering form with tall neck, painted with Buddhist lions playing with a ball amongst the clouds, between lotus and *ruyi* head borders, the neck with *shou* roundels in gilt, the domed cover with a spear knob, decorated with roundels of bats, peaches and key frets, 95cm high (2)
£200 - 400

清十九世纪 髹漆狮戏球纹盖瓶



253

Lot 253*

A Chinese rhinoceros horn necklace, 19th century, consisting of 108 graduated beads along with two strings of extended beads to the sides, attached with hardstone pendants carved with a Buddha or two Buddhist lions, beads approximately 0.7 to 0.9cm diameter, overall 55.8cm long, total weight 98g, accompanied with an associated lacquered circular box painted with flowers and a phoenix, 18.1cm diameter
£3,500 - 4,000

清十九世纪 犀角念珠



255

Lot 255*

A Chinese rhinoceros horn bead necklace, 19th century, consisting of 108 rhino beads along with four ivory beads, rhino beads approximately 0.8cm diameter, overall 50.5cm long, total weight approximately 68g
£1,500 - 2,000

清十九世纪 犀角念珠

Lot 256*

A Chinese rhinoceros horn bead necklace, 19th century, consisting of 108 rhino beads along with four amber beads, rhino beads approximately 0.8cm diameter, overall 53cm long, total weight approximately 72.8g
£1,500 - 2,000

清十九世纪 犀角念珠



254

Lot 254*

A Chinese rhinoceros horn necklace, 19th century, consisting of 108 beads along with two strings of extended smaller beads to the sides, attached with a coral bead to the end, beads approximately 1.5cm diameter, overall 82cm long, total weight 297g, accompanied with an associated hinged lacquered circular box painted with boys at play, 19cm diameter
£8,000 - 10,000

清十九世纪 犀角念珠



256



257

Lot 257*

A Chinese rhinoceros horn bead necklace, 19th century, consisting of 108 rhino beads along with Tibetan metal beads, rhino beads approximately 0.8cm diameter, overall 46.5cm long, total weight approximately 92.7g
£1,500 - 2,000

清十九世纪 犀角念珠



258

Lot 258*

A Chinese rhinoceros horn bead rosary, 19th century, consisting of 54 rhino beads, rhino beads approximately 0.8cm diameter, overall 39cm long, total weight approximately 37.1g
£800 - 1,000

清十九世纪 犀角念珠



259

Lot 259*

A Chinese rhinoceros horn bead rosary, 19th century, consisting of 54 rhino beads, rhino beads approximately 1.4cm diameter, overall 38cm long, total weight approximately 117g
£1,500 - 1,800

清十九世纪 犀角念珠

Lot 260*

A Chinese rhinoceros horn bead necklace, 19th century, consisting of 108 rhino beads along with four amber beads, rhino beads approximately 1.5cm diameter, overall 79cm long, total weight approximately 251.5g
£2,000 - 3,000

清十九世纪 犀角念珠

Lot 261

A Chinese bamboo carving, possibly 19th century, of figures in a pavilion or under pine trees in a rocky landscape, 9.3cm long, wood stand, and a water dropper, early 20th century, in the form of a shell on three stud feet, 6.5cm long, wood stand carved with waves (4)
£100 - 150

清十九世纪(可能) 竹雕山水图摆件 连木底座及 二十世纪初 海螺式水盂 连木底座



260

Lot 262

A Chinese cinnabar lacquered box and cover, late 19th century, of circular form on a short foot, the cover decorated with a literatus and a boy standing under a tree in a garden, against a diapered ground, enclosed within a key fret border, the sides with sprigs of flowers in shaped panels, 12.8cm diameter (2)
£250 - 350

清十九世纪末 剔红雕漆锦地人物故事图圆盖盒



261



262

* These lots are subject to CITES regulations when exporting outside the EU. Non-EU potential purchasers should be aware that, under EU guidance issued March 2012, it is possible that you may not be able to obtain a CITES re-export permit for these lots.

Lot 263

A Chinese gilt-bronze musical table clock, the white enamel dial, with Roman numerals, surrounded by ornate foliage scrolls, the corners decorated with lines of alternating red and yellow calibre cut paste, the clock surmounted by a double gourd similarly decorated with a red and yellow paste outline and with *Daji* (great good fortune) in red paste above a radiating rotating spiral with a bezel set with two rows of graduated red and white eight cut paste, all topped by a paste set pineapple finial, surrounded by four revolving paste set flowers issuing green painted foliage, the clock standing on a rectangular plinth with further revolving paste set flowers at each corner, the front and the sides with cut-out scenes revealing cranes in a lotus pond with watery automaton glass rods, all on foliate scroll and paw feet, *mechanism with maker's signature*, 96cm high
£20,000 - 30,000

铜鑲金乡村音乐水法钟



263



264

Lot 264

A Tibetan wood board,
19th century, from a
lama's throne, painted
with a dragon amongst
clouds above waves in
bright colours,
97 x 154cm
£500 - 800

十九世纪
彩绘云龙纹木板



265



266

Lot 265

A Chinese bamboo carving,
19th century, of three *chilong* playing
in the spuming waves,
15.5cm wide, wood stand (2)
£300 - 500

清十九世纪 竹雕螭龙纹摆件 连木底座



267

Lot 267

A Chinese wood brush pot,
in the form of a tree trunk with *lingzhi*
growing out from the wood, *lingzhi*
head in soapstones,
14cm high
£500 - 700

嵌寿山石灵芝纹笔筒

Lot 266

A Chinese wood hinged box,
of rectangular form on a rectangular
base carved with scrolls, the corners
and sides mounted with metal in the
shape of *ruyi* heads, loop handles,
49cm wide
29cm deep
25cm high
£500 - 800

木书箱

Lot 268

A Chinese wooden bead rosary,
possibly aloeswood, with two beads
inlaid with *shou* in gold, the extended
string with a wood carving of a deer
and *lingzhi*, with two double gourd
carvings to the end,
30cm long, each bead approximately
1.5cm diameter, in a pewter box
£500 - 800

木念珠手串



268

Lot 269

A Chinese table screen,
inserted with a double gourd shaped jade carved with *Daji*
(great good fortune) surrounded by Eight Buddhist Emblems
and clouds, the reverse incised with a poem by Qianlong,
the wood stand carved with *ruyi* head shaped clouds and
archaic scrolls,
37.5cm high
£6,000 - 8,000

嵌玉雕大吉八宝纹桌屏

Lot 270

A Chinese zitan libation cup,
carved as a large flower with smaller blossom and a peach
issuing from a thick stem,
11.1cm long
£1,200 - 1,500

紫檀雕花卉纹杯

Lot 271

A Chinese wood brush washer,
19th century, in the form of a tree trunk carved with gnarls
and a blossoming branch, on three short feet,
13.6cm long
£300 - 500

清十九世纪 木雕笔洗

Lot 272

A Chinese wood brush pot,
in the natural form of a gnarled tree trunk, with mounted
wood rim and wood stand,
22cm high
£300 - 400

随形木笔筒



269



270



271



272

Lot 273

A Chinese wood hanging panel,
20th century, deeply carved with birds flying
amongst a fruiting vine, above peony and
bamboo in a garden, in gilt against a red
lacquered ground, key fret border,
106cm wide
5.5cm deep
66.5cm high
£150 - 250

二十世纪 木漆金花鸟图花板挂屏



273



274



275



276

Lot 274

A Chinese hardwood stand, early 20th century, carved with a shepherd and a boy in boxwood, sheep to their side amongst fruiting pomegranate, all under blossoming trees with double gourds, melons and tendrils, 67cm wide 37cm deep 74cm high £500 - 700

二十世纪初 人物故事图木底座

Lot 275

A Chinese wood brush pot, of cylindrical form, carved with taotie and archaic motifs between key fret borders, 15cm high £400 - 600

木雕仿古笔筒

Lot 276

A Chinese boxwood carving, Qing dynasty (1644-1911), of a luohan wearing a robe with scrolling borders, seated leaning towards a rootwork armrest with a scroll in his right hand, 12.2cm high, pierced wood stand, overall 15cm (2) £2,500 - 3,500

清 黄杨木罗汉坐像 连木底座

Lot 277

Two sets of Chinese carved nuts, 19th-20th century, one with different animals including elephant, dragon, tiger, ram, squirrel, birds with fruits, flowers or bamboo, each nut approximately 2 x 1.5cm, the other with monks, holding books or rosary with sprigs of flowers on their backs, each approximately 2.7 x 1.7cm, and four loose similarly carved nuts (6) £150 - 250

十九至二十世纪 核雕手串 一组两件



277

Lot 277A

A Tibetan *thangka*, early 20th century, embroidered with a haloed lama seated on a rock by a cliff under a pine tree, 56.5 x 33cm

£1,000 - 1,500

二十世纪初 刺绣喇嘛图唐卡

Lot 278

Two Chinese embroidered robes, late Qing dynasty, one decorated with sprigs of flowers, bats with *ruyi* sceptres and butterflies against a blue silk ground, the border with florets against an apricot ground, 143cm wide 105cm long, the other with sprigs of flowers, grapes, butterflies and precious objects in gold thread, all against a dark blue ground, 148cm wide 115cm long (2)

£600 - 800

清晚期 蓝缎地蝶恋花纹氅衣及石青缎地盘金绣折枝花果纹氅衣一组两件

Lot 279

A collection of Chinese embroideries, 19th-20th century, comprising: a pair of sleeves, each decorated with sprigs of flowers and precious objects on a blue ground within a black border, 47 x 188cm, a Chinese rank badge, of the Seventh Civil Rank, with a mandarin duck standing on a rock above waves in gold and silver thread, 31 x 33cm, a pair of wallets, each decorated with bats amongst Chinese characters 'Wanshi Ruyi' (may everything go as one wishes), above waves within false gadroon borders, each 11.4cm wide, and an embroidered table mat, 28cm diameter (4)

£150 - 250

十九至二十世纪 袖口 方补 及其他活计

Lot 280

A Chinese embroidered *kesi* hanging scroll, with three rams on a grass, pheasants, magpies and other birds standing on a blossoming prunus tree by rocks,

113 x 56cm, overall 194 x 73.5cm

£1,500 - 2,000

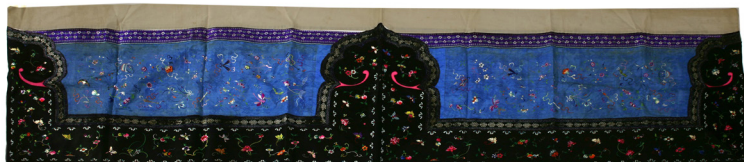
缂丝三阳开泰图



277A



278



279



280

Lot 281

A Chinese kesi rank badge, 19th century, of the Sixth Civil Rank, depicting an egret standing on a rock above waves, surrounded by bats and precious objects against scrolling flowers in gold thread, *now applied to the lid of a jewellery box*, badge 30cm wide
£100 - 150

清十九世纪 缙丝文官六品鹭鸶纹方补

Lot 282

A Chinese embroidered robe, late Qing dynasty, decorated with phoenix and dragon roundels and sprigs of flowers, against a yellow ground with crane roundels amongst clouds, the border with butterflies and flowers in blue, 142.5cm wide
125cm long
£500 - 800

清晚期 黄暗花缎地龙凤呈祥纹氅衣



281



282



283

Lot 283

A Chinese embroidered robe, late Qing dynasty, decorated with sprigs of flowers, melons and butterflies against a teal green silk ground, the border with flowers and butterflies in blue, 122.5cm wide
116cm long
£3,000 - 4,000

清晚期 湖色缎地花果纹氅衣

Lot 284

A Chinese embroidered robe, late Qing dynasty, decorated with butterflies in bright colours and sprigs of blossoming peony against a midnight blue ground, the sleeves with flowers, peaches and bats against a blue ground, 145cm wide
115cm long
£1,500 - 2,000

清晚期
石青缎地蝶恋花纹氅衣



284



285

Lot 285

A Chinese embroidered robe, c.1920, the blue silk with roundels of basket of flowers, florets and gourds, the cuffs with ladies in a garden on white silk, 135cm wide
112cm long
£1,000 - 1,500

民国约1920年 蓝暗花缎地花篮纹对襟氅衣



286

Lot 286

A Chinese summer robe, late Qing dynasty, in yellow silk with *shou* characters and key fret borders, 117cm wide
134.5cm long
£2,000 - 3,000

清晚期
黄纳纱暗花寿字纹氅衣



287

Lot 287

A Chinese kesi panel,
Qing dynasty (1644-1911), embroidered with figures
fishing, cooking, eating or playing music aboard boats
along a river, all against a midnight-blue ground, the
border with scrolling lotus,
53 x 171cm
£1,200 - 1,500

清 缙丝石青地人物故事图

Lot 288

A Chinese embroidered tablecloth,
Qianlong/Jiaqing, of rectangular form, decorated with figures fishing,
walking dogs or appreciating music in a garden with bridges, fences and
pavilions, all within a floral oval panel, the border with sprigs of flowers,
all against a mustard yellow silk ground,
141 x 186cm
£8,000 - 10,000

Provenance: Christie's Paris, 15 December 2010, Lot 140.

清乾隆/嘉庆 黄缎地庭院人物图桌布



288

CHINESE WORKS ON PAPER

289-312



289



290



292

Lot 289

A Chinese gouache picture, late Qing dynasty, by Wang Pu, painted with a lady carrying a *qin* in a garden, a bodhi tree and rocks in the distance, *signed*, ink and colour on paper, 92.5 x 21.5cm, framed and glazed
£100 - 150

清晚期 汪浦 仕女图 设色纸本 镜心

Lot 290

A Chinese gouache picture, mid Qing dynasty, by Xianghu, painted with a lady in long robes standing on waves, with elaborate jewellery, holding a red bead in her right hand, *signed with the seal of Jiang Lian*, ink and colour on silk, 72 x 36.5cm, framed and glazed
£100 - 150

清中期 萝湖蒋莲 仕女图 设色绢本 镜心

Lot 292

A Chinese acrylic painting, by Xin Yongmin, 1997, of a waterfall amongst a misty mountainous landscape, acrylic on canvas, 95.5 x 139cm, framed
£300 - 500

辛永民 山水图 1997年 布面丙烯

Lot 293

A Chinese album, painted with figures in a landscape with mountains and pavilions, *inscribed, signature of Puru*, ink and colour on paper, album 30.7 x 17.3cm
£800 - 1,000

溥儒款 山水图 设色纸本 册页



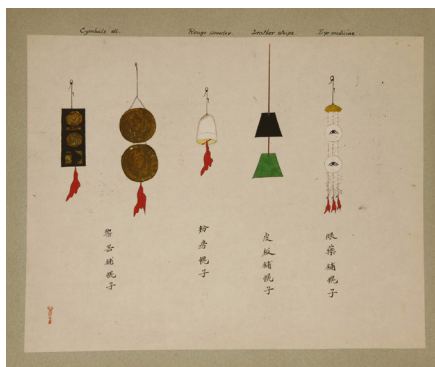
291

Lot 291

Zhou Peichun (1880-1910), Qing Dynasty (1644-1911), a hand-painted book containing eighteen paintings of Beijing shop signs, *each with the seal of Beijing, Zhou Peichun*, ink and colour on paper, each picture 24.6 x 32.3cm, together with 'China in Sign and Symbol', by Louis Crane, published 1926 (2)
£800 - 1,200

清 周培春 京城店铺幌子图 设色纸本

及 鹤路易(路易斯·格林)
《中国招幌》1926年



291 detail



293

Lot 294

A Chinese gouache painting, with a figure seated in a pavilion under a willow tree by a lake in a wintry landscape, ink and colour on silk, *later cut to a fan shape*, image 24.5cm long, framed and glazed
£300 - 500

佚名 山水图 设色绢本

Lot 295

A Chinese photograph album, late 19th century, containing approximately 102 photographs of portrait studies of girls, theatrical performances and European military subjects in China and Japan, with watercolour details, in a lacquered cover with a bone carving of a dragon, album 35.3cm wide
largest photograph 20 x 14cm
£1,000 - 1,500

十九世纪末 佚名 照片集



294



295

Lot 296

A Chinese hanging scroll, painted with a literatus seated in long robes with a fan in his right hand, *dated year of yiyou*, signature of Zhang Daqian, ink and colour on paper, 63.5 x 31cm
£800 - 1,000

张大千款 高士图 设色纸本 立轴

Lot 297

A Chinese hanging scroll, painted with a fisherman on a boat in a mountainous landscape with trees and a pavilion, *inscribed and signed Xinyu*, ink and colour on silk, 102 x 40cm
£800 - 1,200

溥心畲款 山水图 设色绢本 立轴

Lot 298

A Chinese hanging scroll, painted with a lady wearing qipao holding a fan in her right hand, *inscribed, dated year of xinsi*, signature of Zhang Daqian, ink and colour on paper, 78.5 x 43cm
£800 - 1,200

张大千款 仕女图 设色纸本 立轴



296



297



298



299



300

**Lot 299**

Two Chinese hanging scrolls,
one with a family celebrating the birthday of a young boy, *inscribed, signature and seals of Feng Zikai (1898-1975), ink and colour on paper,*

67 x 32cm, and

another of a girl standing at a balcony watching two butterflies, *inscribed, signature and seals of Feng Zikai, ink and colour on paper,*

67.5 x 30.2cm

£100 - 150

丰子恺款 《今夜两岁 明朝三岁》
及 《借问过墙双蛱蝶 春光今在阿谁家》
设色纸本 立轴 一组两件

Lot 300

Two Chinese hanging scrolls,
one with Guanyin standing on a vase, a basket with a carp in her hands, a boy to the lower right greeting to her, *with the signature of Zhang Daqian (1899-1983) and dated April, year of Maoyin, ink and colour on paper,*

92.5 x 50cm, overall 210 x 66cm,

another with a girl standing wearing an elaborate bright dress, holding a fan in her right hand, *with the signature of Zhang Daqian and dated Summer, year of Yiyou, ink and colour on silk,*

84 x 38cm, overall 210 x 52cm (2)

£200 - 300

张大千款 观音图 设色纸本 及 仕女图 设色绢本 立轴 一组两件



301

Lot 301

A Chinese hand scroll,
decorated with sprigs of flowers
including peony, hydrangea,
wisteria, magnolia, lilac, and iris,
ink and colour on silk,

27.5 x 260cm

£800 - 1,000

佚名 花卉图 设色绢本 手卷



302



303



304

Lot 302

A Chinese gouache painting, painted with branches of blossoming peony in a blue and white faceted vase decorated with morning glory on a wood stand, signature of Empress Wanrong (1906-1946), ink and colour on silk, 49 x 37cm
£1,500 - 2,000

郭布罗婉容款 清供图 设色绢本

Lot 303

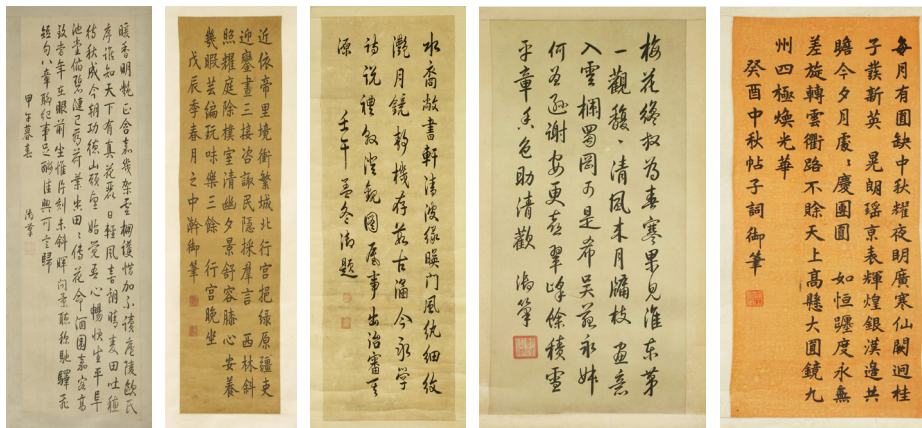
A Chinese gouache painting, painted with a deer by adapting Western painting style of Chinese theme and taste, with the signature of Giuseppe Castiglione (1688-1766), ink and colour on silk, 51 x 49.5cm, overall 73.5 x 69cm
£8,000 - 12,000

郎世宁款 鹿 设色绢本

Lot 304

A Chinese gouache painting, painted with scotch collies and pups playing below a fruiting tree, in the style of Giuseppe Castiglione by adapting Western painting method of Chinese theme and taste, ink and colour on silk, 62 x 92cm, overall 65.5 x 96.5cm
£8,000 - 12,000

佚名 苏格兰牧羊犬 设色绢本



305

Lot 305

A collection of five Chinese calligraphy hanging scrolls, with poems of prunus, the moon or a spring outing, with the signatures of different Chinese emperors Yongzheng, Qianlong and Jiaqing, ink on paper or silk, various sizes from 70 x 30.5cm to 129 x 45.5cm (5)

£500 - 800

书法 一组五件



306



307

Lot 306

A collection of Chinese wallpaper, Republic period (1912-1949), painted with pheasants, peacocks or other birds standing on blossoming peony and cherry trees, or fruiting pomegranate trees, ink and colour on paper, 216.5 x 98cm, 215 x 94cm, 215 x 94cm, 209 x 94cm, 193 x 94cm and 219 x 94cm (6)
£500 - 800

民国 外销花鸟图壁纸 一组六件

Provenance: Originating from the Manor of Scrivelsby. The Manor of Scrivelsby was bestowed to Sir Robert Marmion, by virtue of being a steadfast defender of William the Conqueror amid the Battle of Hastings. Thus, proclaiming the beginning of a hereditary title remaining to this day.

Marmion was the Champion of the Dukes of Normandy and later became the first Kings Champion, fighting for the Monarch's rule over England, against any who threatened to challenge.

Lot 307

A collection of Chinese wallpaper, Republic period (1912-1949), painted with cockerels, peacocks, cranes or other birds standing on blossoming trees or fruiting peach trees, ink and colour on paper, 228.5 x 95cm, 220 x 95cm, 226 x 94cm, 220.5 x 94cm and 220 x 94cm (5)
£500 - 800

民国 外销花鸟图壁纸 一组五件

Lot 308

A Chinese hanging scroll, painted with a literatus seated under a pine tree in front of a cliff, an attendant to his side, *inscribed and signed Xinyu*, ink and colour on silk, 66 x 27cm
£800 - 1,200

溥心畬款 高士图 设色绢本 立轴



308

Lot 309

A Chinese hand scroll, painted with a literatus seated in a boat by the riverbank, in a mountainous landscape, *inscribed and signed Qingxiang Laoren*, ink and colour on paper, the painting 23.5 x 73.5cm, attached with inscriptions and comments from later connoisseurs, overall 387cm long
£1,000 - 1,500

清湘老人款 山水图 设色纸本 手卷

Lot 310

Spare lot

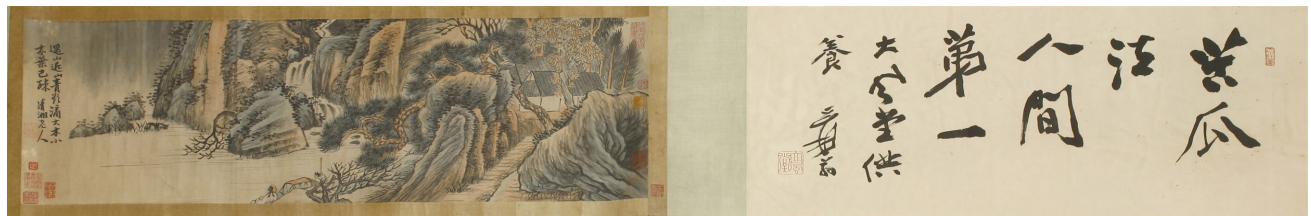
Lot 311

A Chinese hanging scroll, of a poem in calligraphy with the signature of Wang Erlie (1727-1801), ink on silk, 160 x 82.5cm
£200 - 300

王尔烈款 书法 绢本 立轴



311



309 detail

Lot 312

Two Chinese paintings, 19th-20th century, both of fan shape, one with a bird standing on a lychee branch, ink and colour on silk, 25 x 27cm, framed and glazed, the other with a bird standing on the top of bamboo looking up to a butterfly, ink and colour on silk, 27 x 26cm, framed and glazed (2)
£150 - 200

十九至二十世纪 佚名 花鸟图 设色绢本 镜心 一组两件



312

CHINESE FURNITURE

313-328



313



314

Lot 313

A Chinese blackwood display cabinet, 19th century, pierced and carved with dragons amongst clouds, on a rectangular base with false gadroon border on claw feet, 94cm wide 30cm deep 211cm high
£600 - 800

清十九世纪 镂雕云龙纹博古格



315

Lot 314

A pair of Chinese armchairs, 19th century, each with a yoke-shaped top rail and S-shaped back splat pierced with a *shou* roundel, rush matted seats, 63cm wide 44cm deep 113cm high (2)
£200 - 300

清十九世纪 寿字纹藤心官帽椅 一对



316

Lot 316

A Chinese four-fold table screen, early 20th century, each fold inset with a silk embroidery with birds and flowers in a pierced vine and double gourd border, the top section carved with dragons with a Buddhist lion to each end, each fold 76 x 27cm
£400 - 600

二十世纪初 绣花鸟图四扇桌屏



317

Lot 315

A pair of Chinese armchairs, 19th century, each of classical form, with an horseshoe back and a pierced plat carved with *qilin*, rush matted seats, 63cm wide 46cm deep 94cm high (2)
£200 - 300

清十九世纪 藤心麒麟纹圈椅 一对

Lot 317

A Chinese hardwood vase stand, late 19th century, the lobed top inset with rouge marble surrounded by a foliage border, above a pierced apron with pomegranates and flowers, on shaped legs with ball feet, 57cm diameter 57.5cm high
£300 - 500

清十九世纪末 缠枝花果纹嵌大理石花几



318



319

Lot 318

A Chinese five-fold screen,
each fold with four
gouache pictures,
possibly from an album,
painted with famous
stories of renowned
historic figures,
inscribed, ink and colour
on silk,
each picture
26.5 x 33.5cm
each fold
145.5 x 44.5cm
£400 - 600

人物故事图五扇屏风



321



322

Lot 319

A Chinese four-fold screen,
early 20th century, the folds inlaid with a literatus
standing below a pine tree, a faggot collector,
a fisherman or a Daoist immortal with *qilin* in
hardstones, jade, bone and lapis lazuli, the reverse
painted with birds and flowers,
each fold 50 x 183.5cm
£300 - 500

二十世纪初 嵌百宝人物故事图四扇屏风

Lot 320

Spare lot

Lot 321

A Chinese side table,
early 20th century, the shaped top inset with
marble, carved with gourds and melons, on
shaped legs,
61.5cm wide
61cm deep
78.5cm high
£400 - 600

二十世纪初 嵌大理石方桌



323

Lot 322

A Chinese padouk wood pedestal desk,
20th century, in three sections, the rectangular
top with four drawers, each pedestal fitted with
a further drawer above a pierced diapered panel,
joined together with a footrest similarly decorated,
138cm wide
68cm deep
83.5cm high
£600 - 800

二十世纪 裙裾式六屉书桌

Lot 323

A Chinese four-fold screen,
early 20th century, each fold embroidered with an egret with bamboo, a peacock
with chrysanthemum, a pheasant under a bodhi tree and a duck in the lotus pond,
each fold 123 x 39cm
£800 - 1,000

二十世纪初 绣花鸟图四扇屏风



324



325



326



327



328

Lot 324

A Chinese folding armchair, 20th century, the horseshoe-shaped rail with pierced and carved panel of a *qilin* amongst clouds to the shaped backrest, with a woven string seat with a foliage carved top rail, sheet metal mounts throughout, 65cm wide 65cm deep 105cm high
£300 - 500

二十世纪 硬木圆后背雕麒麟纹交椅

Lot 325

A pair of Chinese hardwood jardinière stands, late 19th century, the circular top inset with rouge marble, above a pierced apron with gourds and scrolling flowers, on shaped legs with claw feet united with an 'X' stretcher, 51cm diameter 92cm high (2)
£800 - 1,200

清十九世纪末
缠枝瓜果纹嵌大理石花几 一对

Lot 326

A Chinese wooden sewing box, early 20th century, the hinged cover carved with a boy seated on a buffalo, his hat blowing away, surrounded by a landscape with pine trees, pavilions and a bridge in an oval panel encircled by two dragons, the sides carved with birds and flowers in relief, above a rectangular base on tall shaped legs, the apron pierced and carved with *shou* roundels and key frets, 55cm wide 35cm deep 70cm high
£150 - 250

二十世纪初 木雕人物故事图针线盒

Lot 327

A Chinese hardwood huanghuali side table, 20th century, of rectangular form above humpback cross stretchers, 59cm wide 49cm deep 50cm high
£500 - 800

二十世纪 黄花梨木长方几

Lot 328

A Chinese two-tier side table, 19th century, the square top on splayed supports with pierced and carved blossoming prunus stretchers, 62.5cm wide 63cm deep 60.5cm high
£200 - 250

清十九世纪 花卉纹方几

Lot 329

A collection of miscellaneous catalogues, dated 1989 to 2007, oriental works of art from Lempetz, Spink, Butterfield's, Philip's etc. (93)
£100 - 140

Lot 330

A collection of auction catalogues, dated from 1983 to 2011, Chinese, Japanese and oriental works of art from Sotheby's, Christie's and Bonham's (207)
£150 - 250

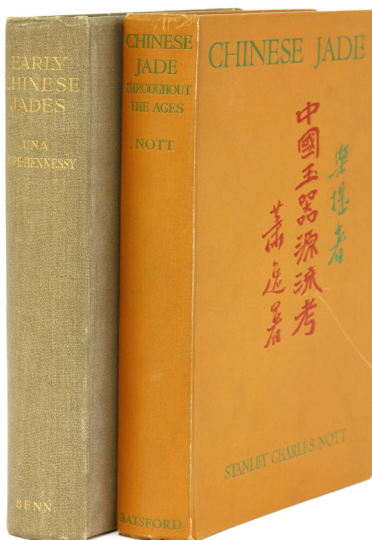
Lot 331

Stanley Charles Nott, 'Chinese Jade', published London, 1936, and Una Pope-Hennessy, 'Early Chinese Jades', published London, 1923 (2)
£100 - 150



329 part lot

Lots 329-331
VAT does not apply to books.



331



330 part lot

JAPANESE PORCELAIN AND CERAMICS

332-335



332



333



333 mark



334



334 mark



335

Lot 332

A large Japanese Imari vase, late 17th century, of octagonal form, painted with flowers and pine trees in shaped panels, against a blue ground with foliage roundels, the shoulder with a shaped border painted with flowers in red, 60cm high
£600 - 800

Lot 333

A Japanese blue and white censer, by Makuzu Kozan (1842-1916), of circular form with everted rim on three stud feet, painted with Mount Fuji with pine trees in the foreground, the sky with splashes of pink, *six character mark of Makuzu Gama Kozan*, 15cm diameter, wood stand and cover, 17.5cm high overall (3)
£1,500 - 2,500

Lot 334

A Japanese Satsuma vase, Meiji (1868-1912), of cylindrical form on a raised circular foot, painted with chickens amongst flowers and bamboo in a shaped panel, the reverse with a landscape with a mountain and river against a midnight-blue ground, painted with flowers and leaves in gilt, the shoulder with gilt swags in relief, *four character Kinkozan mark to base*, 17cm high, associated wood stand (2)
£1,000 - 1,500

Lot 335

A pair of Japanese Satsuma vases, Meiji period (1868-1912), of tapering square form, painted with *samurai*, *sarumawashi* or birds and flowers in shaped panels against a gilt ground, profusely decorated with *ho-o* and flowers, the neck with dragon roundels, 35.8cm high (2)
£400 - 600

JAPANESE CLOISONNÉ AND METALWARE

336-343



336

Lot 336

A Japanese bronze bowl and cover, Meiji period (1868-1912), of globular form with moulded carps, on a stand imitating waves, the cover with a bird standing on a floating branch, 17cm high (2), *maker's mark to the side*, £150 - 250



336A

Lot 336A

A Japanese bronze figure, early 20th century, of Kwanon on a stand in the shape of spuming waves, wearing a long robe with beaded jewellery, a basket of a carp in her left hand, her face, hands and feet in ivory, *engraved maker's mark*, 29cm high (2), £400 - 600



338

Lot 337

A Japanese bronze planter, c.1900, of shaped rectangular form raised on feet in the form of four boys, cast with birds and flowers, mask and tongue handles, original pewter lining, *maker's mark to the base*, 57cm long, £100 - 150

Lot 338

A Japanese bronze stand, Meiji period (1868-1912), the circular top with key fret and *reishi* borders on five tall mask and tongue legs above a circular base moulded with a dragon amongst other mythical beasts, 19cm high, £100 - 150



337



339



341



340

Lot 339

A Japanese bronze figure, Meiji period (1868-1912), of a lantern-maker, seated painting a *mon* on to a lantern, maker's mark *Hidemitsu kansei* in a seal, 15cm high, associated lacquered wood stand decorated with birds and flowers in gilt (2) £400 - 600

Lot 340

A pair of Japanese bronze vases, Meiji period (1868-1912), each of globular form on a circular stepped foot with a long neck and everted rim, moulded with roundels of mythical beasts enclosed by cloud borders, the neck applied with an octopus and another mythical sea creature against a diapered ground, with *ho-o* handles, maker's mark in a seal to the base, 48cm high (2) £150 - 250

Lot 341

A Japanese bronze plate, 20th century, of a frog sitting on a lotus leaf, four character *Qianlong* mark to base, 18.3cm diameter £200 - 250

Lot 342

Three Japanese bronze vases, Meiji period (1868-1912), one of lobed baluster form, maker's mark to the base, collector's label 'Gregg Baker, London, 3995', 21cm high, one of pear form with a long cylindrical neck, collector's label 'Gregg Baker, London, 3339', 30.2cm high, and another of lobed garlic form on a circular foot, 27.5cm high (3) £250 - 350

Lot 343

A pair of Japanese bronze incense burners, early 20th century, each modelled as a goose raising its head, a smaller bird sleeping on its back, their feathers incised in details, 17.8cm high (2) £100 - 150



342



343

JAPANESE WORKS OF ART AND FURNITURE

344-369

Lot 344

A Japanese ivory okimono, Taisho period (1912-1926), in the form of a leaf curled around six chestnuts, two additional chestnuts alongside, a worm to the base and *maker's mark*, 10cm long, associated wood stand (2)
£200 - 300



344

Lot 345

A Japanese ivory okimono, Meiji period (1868-1912), of an articulated crab, 11cm long, associated wood stand (2)
£200 - 300



345

Lot 346

A Japanese ivory okimono, Meiji period (1868-1912), of a cat chasing the mouse on a man's shoulder, *maker's mark Seiko* in a red lacquered seal, 7.5cm high, associated wood stand (2)
£200 - 300



346

Lot 347

A Japanese ivory okimono, Meiji period (1868-1912), of a father wearing a long robe with a staff and a rosary in his right hand, looking at the frog in the right hand of his son, *signed Seinao* in a red lacquered seal, 7.5cm high, associated wood stand (2)
£250 - 350



347

Lot 348

A Japanese ivory okimono, Meiji period (1868-1912), of Ebisu catching a large *tai* fish escaped from his basket, *signed Toshimune*, 5cm high, associated wood stand (2)
£200 - 300



348

Lot 349

A Japanese Tokyo School ivory carving, Meiji period (1868-1912), of a boy standing on an oval plinth, holding a rabbit in his arm whilst feeding it with leaves, *engraved mark Ryushu* to base, 15cm high
£300 - 400



349

Lot 350

A Japanese ivory okimono, Meiji period (1868-1912), of an entertainer playing a *samisen*, 6cm high, associated wood stand (2)
£180 - 250



350

Lot 351

A Japanese ivory hawk, Meiji period (1868-1912), naturalistically carved with wings open, inlaid eyes and silver claws on a lacquered stand, decorated with foliate scrolls in gilt, 8.8cm long overall 19cm high
£250 - 350



351



352



353



354



355



356

**Lot 355**

Two Japanese ivory Shibayama bezique markers,

Meiji period (1868-1912), the tops inlaid with mother-of-pearl and hardstones with cherry blossom or another fruiting branch, each hinged flap with a different insect, each 9.2cm (2)

£100 - 150

Lot 356

A Japanese ivory Shibayama box and cover,

Meiji period (1868-1912), the cover inlaid with mother-of-pearl and hardstones of a lady in kimono, overlooking her shoulder at the flowers with a butterfly and a quail, 8.3 x 9 x 3.5cm, and

an ivory okimono, of a man and a boy standing by two buckets, *maker's mark Kozan*, 10.5cm high (3)

£150 - 200

Lot 357

A Japanese ivory okimono, Meiji period (1868-1912), with a man holding a vine tendril with grapes and leaves, with three squirrels trying to steal the fruit, *maker's mark Kogetsu* to base, 22.2cm high

£150 - 200



359

Lot 358

Two Japanese ivory netsuke, early 20th century, one with an hare with coral eyes, 3.7cm, and another, with a group of puppies, 4cm (2)

£100 - 150

Lot 359

A Japanese ivory box and cover, Meiji period (1868-1912), of oval form, carved with chrysanthemums and peony emerging from a woven basket, on three feet in the shape of a finger citron, a pomegranate and a corn, the knob carved with a snail hiding under a flower, *maker's mark* to base, 13cm high,

a picture frame, carved with irises, *maker's mark Yoshinobu*, 12.5cm high, and a parasol handle, carved with foliage, *maker's mark Ryubi*, 24.5cm long (4)

£300 - 400



357



360

Lot 360

A Japanese ivory katana, Meiji period (1868-1912), the scabbard deeply carved with figures at different pursuits, including a *sarumawashi* monkey trainer, musicians, circus performers and a gourd maker, in shaped panels against a scrolling lotus ground, the cross guard with key fret border, 88cm long
£4,000 - 5,000



361

Lot 361

A Japanese ivory okimono, Meiji period (1868-1912), of a faggot-collector standing with his *kiseru zutsu* in his right hand, his collection of work on his back, maker's mark in a red lacquered reserve, 12.5cm high
£100 - 150



362

Lot 362

A Japanese lacquered tea caddy, 19th century, the cover decorated in *hiramaki-e* with a seated lady passing a scroll to a *samurai*, the interior with two hinged lacquered pewter-lined boxes, the lids decorated with a birdcage surrounded by cherry blossom, the birds having flown free across the interior of the lid, 26.5cm long, and a lacquered casket, of rectangular form on four ball feet, decorated in gilt with a landscape, birds and flowers, one sliding side opening to reveal a secret drawer, 30cm long (2)
£200 - 300

Lot 363

A pair of Japanese embroidery panels, Meiji period (1868-1912), of pheasants standing below blossoming wisteria, each 133 x 67cm, framed and glazed (2)
£200 - 300



363

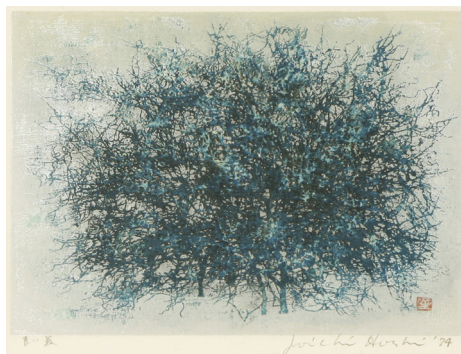




364

Lot 364

A Japanese embroidery,
Meiji period (1868-1912), decorated with a cockfight
amongst blossoming trees, below the moon and clouds,
204 x 118cm
£700 - 1,000



365

Lot 365

Two Japanese woodblock prints,
by Joichi Hoshi (1911-1979), comprising:
TREETOP (BLUE), 1973, signed and dated in pencil, 24.8 x 24.8cm, and
BLUE THICKET, 1974, signed and dated in pencil, 15.7 x 22.5cm,
both framed and glazed (2)
£100 - 150



366

Lot 366

A collection of four Japanese woodblock
prints,
by Haku Maki (1924-2000), comprising:
76-25 (HORSE),
of the kanji character horse against a black
ground, signed and numbered 107/204 in
pencil, 19.8 x 19.8cm,
76-40,
of a persimmon against a black ground,
signed and numbered 149/205 in pencil,
19.8 x 19.8cm,
75-60,
of kanji characters of horse, ram and other
characters against a black ground, signed and
numbered 235/301 in pencil, 10 x 10cm, and
75-61,
of a tree against a light blue ground, signed
and numbered 224/302 in pencil, 10 x 10cm,
all framed and glazed (4)
£150 - 200

Lot 367

A large gouache painting,
20th century, possibly Korean, of gwan-eum
(Guanyin) standing on a lotus pedestal
with a celadon pot in her hands, wearing
elaborate headdress and a long robe,
surrounded by Bodhisattvas and monks,
ink and colour on cloth,
191 x 100cm, framed
£1,500 - 2,000

Lot 368

A Japanese two-panel byōbu folding
screen,
20th century, painted with birds amongst
bamboo in the snow by a river, ink and
colour on paper,
picture overall 136 x 113cm
each panel 153 x 64cm
£100 - 150



368



367

Lot 369

A Japanese four-panel byōbu folding
screen,
of Hotei seated leaning on his bag of
fortune in a garden, with boys surrounding
a large vase of flowers, ink and colour on
paper,
each leaf 104 x 62cm
£200 - 300



369

ADDITIONAL LOTS

Chinese and Japanese Porcelain and Works of Art

370-509



Lot 370

A Chinese hanging scroll, of a mountainous landscape, with trees in shades of red and yellow, inscribed with the signature of Li Keran, ink and colour on paper, 133 x 69cm
£50 - 80



Lot 371

Two Chinese vases, one decorated with famille verte vases against a blue ground, six character Yongzheng mark, 43cm high, a Jun-ware glazed vase with elephant handles, 18cm high, and a red-glazed vase, possibly Japanese, with splashes of blue, four character moulded mark to base, 22cm high (3)
£100 - 150



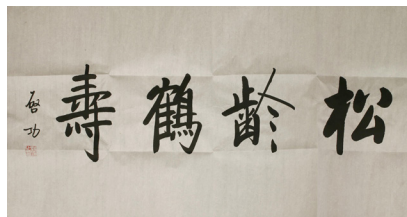
Lot 372

A Chinese agate carving, of a boy carrying the stem of a lotus flower on his shoulder whilst riding on the back of a qilin, who gazes at a dragon above, 25.8cm high, wood stand (2)
£70 - 100



Lot 373

A pair of Chinese wine cups, of bell shape on a circular foot, decorated with irises and butterflies by a rock, four character Juren Tang zhi mark to base, 4.7cm high (2)
£80 - 120



Lot 374

A Chinese calligraphy, reads 'Song Ling He Shou', with the signature of Qigong, ink on paper, 50 x 99cm, unframed
£60 - 80



Lot 375

A Tibetan thangka, 20th century, painted with Shakyamuni seated in the centre of mandala surrounded by Tibetan monks and Bodhisattvas, 50 x 36cm, framed and glazed
£100 - 150



Lot 376

A Chinese cloisonné dish, early 20th century, of circular form, enamelled with a bird standing on a peach blossoming tree, against a blue ground, 30.3cm diameter
£50 - 80



Lot 377

A Chinese doucai saucer, of circular form, decorated with a dragon chasing a flaming pearl amongst clouds, the underside with waves, six character Yongzheng mark, 11.5cm diameter
£60 - 80



Lot 378

A Chinese famille verte bowl, of circular form with flared mouth, painted with blossoming peony, the other side with an inscribed scroll, six character Kangxi mark in blue, 24.7cm diameter
£50 - 80



Lot 379

A Chinese famille rose saucer, 19th century, painted with two quails by rocks and flowers, 14cm diameter
£50 - 80



Lot 380

A Chinese porcelain brush washer, in the shape of a two-handled archaic wine cup, all under a sky blue glaze, *six character Qianlong mark*, 11.2cm wide
£70 - 100



Lot 381

A Chinese famille rose vase, c.1900, of baluster form with a flared, lobed rim, painted with figures in a court, or at battle in the mountains, surrounded by flowers and birds, 32.5cm high
£100 - 150



Lot 382

A Chinese blue and white brush pot, of cylindrical form, painted with a scholar and his attendant in a garden, 11.3cm high, and a coral ground jar, 10cm high (2)
£60 - 80



Lot 383

A Chinese famille rose mug, painted with blossoming prunus, inscription to the back, the cover similarly decorated with a ball knob, 14.5cm (2)
£50 - 80



Lot 384

A Chinese famille rose vase, of tapering form, painted in shaped panels with ladies in a sitting room or in the garden, against a pink ground with foliage scrolls, *four character Qianlong mark*, 21.5cm high
£40 - 60



Lot 385

A pair of Chinese hardstone bowls, early 20th century, of circular form on a circular foot with flared mouth, the stone of transparent green colour, 13cm (2)
£50 - 80



Lot 386

A Chinese soap stone brush washer, carved with *qilin* and dragons amongst clouds, 30cm long
£80 - 120



Lot 387

A Chinese water pot, 20th century, of domed shape with a short neck under *jun* glaze, 6.3cm diameter, a crackled glaze bowl, 8.6cm diameter, an emerald green seal paste box and cover, *six character Kangxi mark*, 6.3cm diameter, and a scroll weight in the form of a recumbent Buddhist lion under a green glaze, 10.4cm long (4)
£70 - 80



Lot 388

Two Chinese hardstone seals, 20th century, one carved with a *chilong* above *lingzhi*, 12.5cm high, the other with carp in a lotus pond, engraved with the maker's mark to the side, 7.5cm high, two cylindrical hardstone tubes, 7cm long, and a soapstone brush washer, carved with archaic characters to the side, 10.5cm long, wood stand (6)
£100 - 150



Lot 389

Two Chinese embroideries, 20th century, comprising a rank badge of the First Civil Rank with a crane standing on a rock above waves surrounded by Buddhist Emblems, all in silver and gold thread, 39 x 42cm, the other with a roundel with a crane in the centre surrounded by the Eight Daoist Emblems and bats against a red ground, 49.5 x 59.5cm (2)
£60 - 80



Lot 390

A Chinese hanging scroll, 20th century, painted with buildings behind trees in a mountainous landscape, inscription and two red seals, ink on paper, 36 x 29.5cm
£100 - 150



Lot 391

A Chinese gouache picture, 20th century, with ladies and boys around a table playing with goldfish, ink and colour on silk, 88 x 146cm, framed and glazed
£150 - 250



Lot 392

A Chinese jar, 20th century, of tapering square form, painted in green enamel with figures in a garden in shaped panels surrounded by florets above a false gadroon border, the shoulder with phoenixes below a key fret border to neck, all against an ox blood ground, six character *Da Ming Longqing Nian Zao* mark in blue to base, 24cm high
£60 - 80



Lot 393

A collection of four Chinese pictures, 20th century, comprising: one by Wu Fenghui, painted with two ladies looking out from a window, inscribed and signed, ink and colour on silk, 30.2 x 39.5cm, framed and glazed, and another three with flowers, ink and colour on paper, 15 to 22.5cm (4)
£150 - 250



Lot 394

A Chinese famille rose vase, 20th century, of ovoid form on a flared foot, painted with figures in a garden from the story of the 'Dream of the Red Chamber', the reverse with an inscription, the shoulder and neck with scrolling lotus, four character *Qianlong* mark to base, 28.5cm high
£200 - 300



Lot 395

A Chinese famille rose vase, 20th century, of tapering form, painted with a phoenix, a crane, a pair of mandarin ducks and other birds, below a bodhi tree by blossoming peony, the reverse with an inscription, six character *Qianlong* mark, 23cm high
£150 - 250



Lot 396

A large Chinese jar, 20th century, of ovoid tapering form with flared mouth, pierced with carps amongst reeds in a lotus pond, between a false gadroon and a banana leaf borders, six character *Wanli* mark, 38cm high
£100 - 150

**Lot 397**

A Chinese rock crystal carving, 20th century, of literati standing under a pine tree in the mountains, a pavilion with a stream in the foreground, inscribed to the back with Qiusan Huiyou Tu (a picture of meeting friends in the autumn mountain), 12.5cm high, wood stand (2)
£50 - 80

**Lot 398**

A Chinese bowl and cover, of circular form with four loop handles, painted with buildings in a mountainous landscape, the cover similarly decorated with a landscape and an inscription, signed Guojun, 25cm diameter (2)
£70 - 100

**Lot 399**

A collection of Chinese porcelain, comprising: a Chinese blue and white vase, 19th century, painted with phoenixes amongst clouds above waves, *four character Qianlong mark*, 15.2cm high, a Chinese canton enamelled teapot and tea cup, painted with birds and flowers, teapot 11cm high, in a rattan box, and a lobed bowl with goldfish, *six character Tongzhi mark*, 18.5cm diameter (3)
£100 - 150

**Lot 400**

A Chinese teapot, decorated with a landscape scene and a pavilion by a river in a mountainous landscape, the other side with archaic characters, 15.5cm long (2)
£50 - 80

**Lot 401**

A Chinese famille noire vase, 20th century, of cylindrical form, painted with millefleur pattern against a black ground above a false gadroon border, 61cm high
£100 - 150

**Lot 402**

Two Chinese blue and white dishes, first half of the 19th century, painted with flowers, 8 and 17.2cm, and three celadon bowls, Yuan and later, a celadon saucer, and a pot, 10cm high (7)
£60 - 80

**Lot 403**

Two South Chinese pots, Song-Yuan dynasty, with loop handles, 11 and 18cm high, a kendi, moulded with a dragon, 17.5cm high, and a Canton enamelled bowl, c.1900, painted with figures in a garden on a yellow ground, 19.2cm diameter (4)
£100 - 150

**Lot 404**

A Chinese blue and white bulb vase, c.1900, with six openings, decorated with dragons amongst flowers below a ruyi shaped border, *four character Kangxi mark*, 24.5cm high
£250 - 350

**Lot 405**

A Chinese bronze plate, in the shape of a leaf, the underside with extended tendrils and leaves, the interior engraved with a poem on peony, two seals, 27.5cm long
£200 - 300



Lot 406

A Chinese porcelain teapot, of ovoid form, painted with swallows amongst flowers, the reverse with inscriptions, 15.5cm high (2)
£100 - 150



Lot 407

A Chinese bonsai, 20th century, of a blossoming magnolia plant in Peking glass, in a cloisonné jardinière with phoenixes amongst scrolling lotus, 64cm high
£80 - 120



Lot 408

A large Chinese bronze figure, of Guanyin in long robes, standing with a bottle in her left hand, 99cm high
£2,500 - 4,500



Lot 409

A collection of six Chinese agate tea bowls, each of circular form with a flared mouth, four character Qianlong mark, 6cm diameter, in a wooden box
£100 - 150



Lot 410

A Chinese hanging scroll, painted with fish amongst reeds, dated Year of Renwu with the signature of Zhang Daqian, ink and colour on paper, 58 x 29cm
£100 - 150



Lot 411

A Chinese wood court necklace (chaozhu), consisting of 108 wooden beads with spacers and pendant drops in blue glass, 115cm long, each bead approximately 1.3cm diameter
£100 - 150



Lot 412

Two Chinese bronze mirrors, one circular, the other lobed, moulded with birds or mythical beasts, 11.4 and 13.2cm, fitted in a box in the shape of a book
£300 - 400



Lot 413

A Chinese jade carving, in the Tang style, of a girl seated presenting a tray with a cup in her hands, the stone of celadon tone, 12cm
£200 - 300



Lot 414

A collection of three Chinese jades, in the archaic style, comprising one cong, 8.2cm, one belt hook, 10cm and a hilt, 6.5cm (3)
£200 - 300



Lot 415

A Chinese jade bi disc, engraved with archaic scrolls, in the middle of a blade similarly decorated, the stone of white tone with inclusions, 17.5cm long
£200 - 300



Lot 416

A Chinese bowl and cover, of circular form with four loop handles, painted with swallows by a peach blossoming branch, the cover similarly decorated with an inscription dated 1976, 25.8cm diameter (2)
£70 - 100



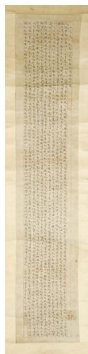
Lot 417

A Chinese jade carving, of two *chilong* on top of two archaic *bi* discs, 8cm, wood stand, four character *Qianlong* mark to the base of stand (2)
£500 - 800



Lot 418

A Chinese bronze mythical beast, recumbent with its head tilted to the side, inlaid with gold and silver archaic motifs, 9.5cm long, wood stand (2)
£300 - 400



Lot 419

A Chinese hanging scroll, of the 'Thousand Character Classic' in calligraphy, signature of Wen Zhengming, 88 x 17.5cm
£300 - 400



Lot 420

A Chinese jade carving, carved with two rabbits standing in front of rocks, gazing at the moon in the clouds, 8.2cm wide
£100 - 150



Lot 421

A pair of Chinese elm chairs, 20th century, with plain stretchers, 42cm wide, 51.5cm high, and a lacquered and worn box, 50cm wide (3)
£150 - 200



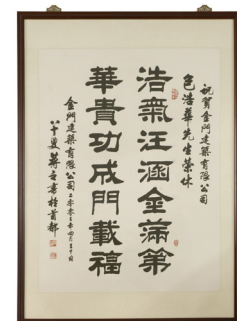
Lot 422

A Chinese blue and white vase, early 20th century, of cylindrical form, painted with scrolling lotus, 46cm high
£70 - 100



Lot 423

A Chinese oil painting, 20th century, painted with the Queen Mother of the West seated with a boy in her arms, attendants to her side, all above clouds, signature of Shen Guoquan, dated November of the 24th year (1935), oil on canvas, 90.5 x 68cm, framed
£80 - 120



Lot 424

A Chinese calligraphy, in celebration of a colleague's retirement, the writings read 'Hao Qi Wang Han Jin Man Di, Hua Gui Gong Cheng Men Zai Fu' (magnanimous and generous bring wealth to the family, noble minded character and successful achievements bring good fortune to the gammon), signed and dated 30 April 2003, 132 x 93.5cm, framed and glazed
£100 - 150



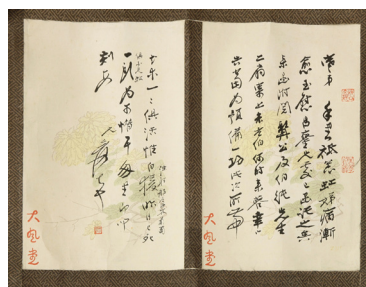
Lot 425

A Chinese famille rose plaque, of a literatus, possibly Wang Xizhi, with an attendant and two geese, *inscribed with the signature of Wang Qi*, 37 x 24cm, framed
£100 - 150



Lot 426

A Chinese embroidered hanging scroll, of 'Feng Tian Cheng Yun' (By the Grace of God) between two dragons amongst flames against a bright yellow ground, 80.2 x 49.2cm, overall 160 x 58cm, a hanging scroll with ducks and an inscription, 35.5 x 29.8cm, overall 182 x 45cm, and a calligraphy, 27.5 x 17.7cm each, overall 52 x 36.5cm (3)
£100 - 150



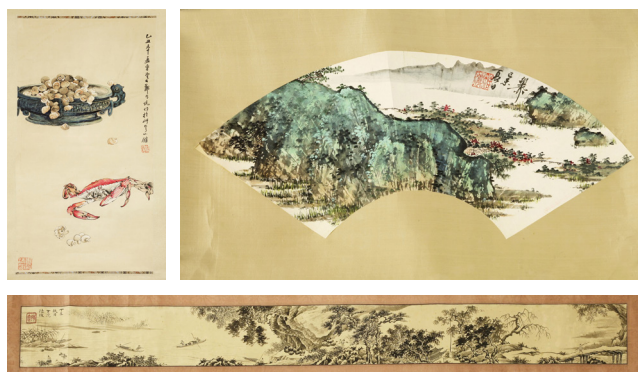
Lot 427

Three pairs of Chinese calligraphy couplets, each with two verses of poems, ink on paper, one pair with signatures of Puru, 60 x 16cm each, one pair with seals of Qianlong, 134 x 29cm each, and another pair with signature of Qi Baishi, 166.5 x 36.5cm each (6)
£100 - 150



Lot 428

A collection of five Chinese hanging scrolls, comprising two scrolls painted with monkeys in a mountainous landscape, ink and colour on silk, 29 x 43cm and 19 x 55cm, and two with pavilions and trees, ink and colour on silk, 51 x 29.5cm and 87 x 16.8cm, and another, ink and colour on paper, 65.5 x 31.8cm, *all inscribed and signed Xinyu* (5)
£250 - 350



Lot 429

A collection of three Chinese scrolls, comprising a hanging scroll, painted with a crab and an archaic bronze bowl with sea shells, *dated year of yichou, inscribed and signed*, ink and colour on paper, 67.5 x 33cm, a fan painting, of a landscape, *inscribed*, ink and colour on paper, 23 x 49cm, and a hand scroll, painted with fishermen in boats on a river amongst trees, *inscribed*, ink and colour on paper, 9.5 x 100cm (3)
£150 - 250



Lot 430

A collection of three pairs of couplets, each with a poem, two with the signature of Puru, ink on paper, 66 x 11cm each and 66 x 10.7cm each, and another similar, 66.4 x 11cm each (6)
£100 - 150



Lot 431

A Chinese famille rose charger, Qianlong (1736-1795), of lobed circular form, the centre painted with a girl and a boy in a garden surrounded by a border of peony and precious objects in blue, 34.8cm diameter
£100 - 150



Lot 432

A pair of Chinese famille rose dishes, 19th to 20th century, painted with a couple drinking in a sitting room, an attendant by their side with a wine pot, gilt foliage scroll borders and ruby backs, 23.2cm diameter (2)
£400 - 600



Lot 433

A Chinese blue and white vase, painted with dragons amongst scrolling lotus, the shoulder similarly decorated with phoenixes, six character Qianlong mark, 39cm high
£200 - 300



Lot 434

A pair of Chinese bowls and covers, 19th century, of circular form, painted with peony and rocks in gilt against a midnight blue ground, the domed covers similarly decorated with spear knobs, 16.5cm high (4)
£60 - 80



Lot 435

Two Chinese root carving brush pots, in natural form, one covered with lacquer on a stand, 15 and 18.8cm high (2)
£100 - 200



Lot 436

A Chinese gouache picture, 20th century, painted with Daoist immortals riding a donkey or travelling above clouds, a crane to the sky, ink and colour on silk, 148 x 37cm, framed and glazed
£100 - 150



Lot 437

A collection of Chinese blue and white plates, painted with birds, flowers and landscapes, comprising: 18th century, a platter, 29.4cm, 2 tureen stands, 24cm, a plate, 23cm diameter, and a Chinese blue and white tureen and cover, 32cm long, 19th century: 4 plates, 23cm, and 20th century: an Imari boat-shaped bowl, 35cm long (11)
£200 - 400

Lot 438

Spare lot



Lot 439

A Chinese gouache painting, with Li Tieguai carrying a double gourd on his back surrounded by two bats, inscribed and signed, ink and colour on paper, 99.5 x 43cm
£70 - 100



Lot 440

A Chinese famille rose tea bowl, Qianlong (1736-1795), painted with a lady and a boy in a sitting room in shaped panels, 7.5cm diameter, and a pair of hardstone tea bowls, 20th century, of circular form with flared mouth, the stone of spinach green, 9.8cm diameter, wood stands (5)
£60 - 80



Lot 441

A Chinese famille verte fish bowl, 20th century, painted with *qilin* and other mythical beasts in shaped panels against a diapered ground with butterflies and flowers, the interior with goldfish, 40cm high, wood stand
£150 - 250



Lot 442

A collection of Chinese wood stands, various sizes (24)
£50 - 80



Lot 443

A Chinese bronze Guanyin, 20th century, standing on a lotus above waves with a *ruyi* sceptre in her left hand, 26.2cm high, and a wood stand in the shape of a lotus (2)
£150 - 250



Lot 444

A Chinese famille rose punch bowl, 18th century, of circular form, painted with a man in yellow robe reaching out from a window, and other figures in a garden within shaped panels with scroll borders, 30.1cm diameter
£100 - 150



Lot 445

A Chinese blue and white vase, 19th to 20th century, painted with two dragons chasing a flaming pearl amongst clouds against a blue ground, 50.5cm high
£500 - 700



Lot 446

Two Chinese brush washers, of circular form with curled in rims, one painted with a crane, the other painted with landscape, 9.7cm diameter, an ink paste box and cover, of circular form, painted with landscape, 6.7cm diameter, and three bowls, decorated with flowers and inscriptions on a yellow ground, 10.6cm diameter (7)
£100 - 150



Lot 447

A Chinese ivory figure, c.1900, of an heavenly maiden standing on rocks, holding a basket in her raised hands, from which she spreads flowers, 21.8cm high, wood stand (2)
£250 - 350



Lot 448

A Chinese porcelain plaque, painted with a bird standing on a peach branch, dated year of yinsi, 31.7 x 23.2cm
£200 - 300



Lot 449

A Chinese blue and white plate, of circular form, painted with scrolling lotus, six character Guangxu mark to base, 16cm diameter
£50 - 80



Lot 450

A Chinese Cultural Revolution poster, 1966-1976, of people waiting in a queue to purchase government bond, 52 x 76cm
£60 - 80



Lot 451

A Chinese Cultural Revolution poster, 1966-1976, with an archaic armillary sphere on a dragon stand, looking up to a modern satellite, 76 x 52cm
£60 - 80



Lot 452

A Chinese Cultural Revolution poster, 1966-1976, of soldiers holding weapons amongst red flags, to encourage the victory of people from the whole world in the defeat of American Imperialism, 76 x 52.5cm
£60 - 80



Lot 453

A Chinese Cultural Revolution poster, 1966-1976, of a soldier with weapons, to promote 'All reactionaries are paper tigers', 53 x 76cm
£60 - 80



Lot 454

A Chinese Cultural Revolution poster, 1966-1976, of people from different countries, to call for people from the whole world to unite to defeat the American invaders, 53 x 76cm
£60 - 80



Lot 455

A Chinese Cultural Revolution poster, 1966-1976, with a high voltage power pole by a dam, to encourage building a country with modern industry, agriculture and science, 77 x 52.5cm
£60 - 80



Lot 456

A Chinese eight-fold screen, 20th century, each with a ink rubbing of a carved stone panel, each fold 140 x 40cm
£100 - 150



Lot 457

A pair of Chinese blue and white vases, of globular form painted with vases of flowers and precious objects, 59.5cm high (2)
£200 - 300



Lot 458

A Chinese blue and white ewer, Kangxi (1662-1722), of baluster form, painted with a bird standing on a blossoming branch, fitted with silver mountings, 23cm high
£60 - 80



Lot 459

A Chinese lacquered panel, 19th century, decorated with an official talking to an attendant surrounded by a diapered border with cranes and *shou* roundels, the reverse with a poem, 21.8 x 13.3cm, a 19th century brass two-tiered incense burner of rectangular form on four bracket key fret feet, the sides engraved with flowers and landscapes, the domed cover pierced with flowers and bamboo, 9.5cm long, a green Peking glass bowl, 16.7cm diameter, and a wood stand (4)
£120 - 150



Lot 460

A pair of Chinese sancai Buddhist lions, 20th century, seated on a yellow pedestal, each with his head tilted to the side covered in a green glaze, 17.5cm high, associated wood stands, and a horse under a similar glaze, 4.6cm high (5)
£60 - 80



Lot 462

A pair of Chinese wood stands, 19th century, of baluster form inlaid with tendrils and gourds in mother-of-pearl, later circular top and base, 26.7cm high (2)
£100 - 200



Lot 463

A Chinese walking stick, late 19th century, the ivory handle carved with figures, trees and pavilions in a garden above a white metal ferrule, 86cm long
£80 - 120

Lot 461

Spare lot



Lot 464

A pair of Chinese ivory carvings, 19th century, of two confronting dragons in the Ming style, 18.5 and 19.6cm long (2)
£100 - 200



Lot 465

A pair of Chinese blue and white vases, 19th century, painted with blossoming prunus against a blue ground, four character Kangxi mark, 29.8 and 30cm high (2)
£60 - 80



Lot 466^

A Chinese porcelain vase, painted with a continuous mountainous landscape with an inscription, moulded *ruyi* head border to mouth, shoulder and base, dragon handles, four character Qianlong mark, 42cm high
£150 - 250

^ For full details, please see page 109.

**Lot 467^**

A Chinese famille rose vase, of ovoid form on a circular foot, painted with scrolling flowers with *shou* characters against a *sgraffito* turquoise ground, *six character Qianlong mark*, 31.5cm high
£100 - 150

^ For full details, please see page 109.

**Lot 468^**

A Chinese blue and white vase, painted with dragons amongst clouds above waves, key fret border to the rim, *six character Qianlong mark*, 38.5cm high
£100 - 150

^ For full details, please see page 109.

**Lot 469^**

A Chinese porcelain vase, of archaic bronze form, painted with a landscape in a roundel against a black ground with butterflies and gourds in gilt, *six character Qianlong mark*, 35.5cm high
£150 - 250

^ For full details, please see page 109.

**Lot 470**

A collection of Chinese famille rose, 18th to 19th century, comprising: a two-handled cup and cover with an en suite plate, the cup with two dragon handles, painted with sprigs of flowers, the cover similarly decorated with a flower knop, plate 17.4cm diameter, five famille rose plates, Qianlong, painted with flowers and birds, 22.6 to 23.3cm, and a jardinière on stand, Jiaqing, of circular form with a flared mouth on three bracket feet, painted with sprigs of flowers with an iron-red border, the stand similarly decorated, jardinière 11.6cm diameter (10)
£100 - 150

**Lot 471**

A Chinese gilt wood ruyi sceptre, 19th century, in the shape of a blossoming peony branch, 38cm long
£40 - 60

Lot 472

Spare lot

**Lot 473**

A pair of Chinese porcelain bowls, 20th century, painted with blossoming branches and other flowers, *four character mark Qizhen Ruyu*, 10cm diameter, wood stands (4)
£60 - 80

**Lot 474**

A Chinese Canton famille rose vase, late 19th century, of ovoid form with lobed flared mouth, painted with figures, birds and flowers, applied gilt *chilong* to the shoulder, Buddhist lion handles, 44.5cm high
£70 - 100

**Lot 475**

A Chinese box and cover, the top decorated with Chinese characters 'Pu Tian Tong Qing' (the whole world or nation joins in the jubilation) against a diapered ground, the sides with flowers in panels surrounded by archaic motifs, *six character mark of Guangxu to base*, 21.5cm square (2)
£400 - 600



Lot 476

A pair of Chinese cloisonné incense burners, 20th century, of archaic form on three mask feet, enamelled with scrolling lotus, 19.5cm high (2)
£80 - 120



Lot 477

A pair of Chinese hardwood chairs, with yoke shaped top rail and shaped back splat, 63cm wide, 47cm deep, 111cm high (2)
£100 - 150



Lot 478

Three Chinese Canton ivory card cases, 19th century, carved with figures, trees and pavilions in a garden, 9.6, 10.7 and 11.5cm (3)
£200 - 300



Lot 479

A Chinese ivory handle, early 20th century, carved with a dragon amongst clouds and bats between key fret borders, 13cm, and an ivory stand, of octagonal form, 4.3cm long (2)
£100 - 150



Lot 480

A Chinese famille rose plate, of circular form, painted with peacocks standing on a rock with peony, chrysanthemum and other flowers, the shaped border with pomegranates, 23.2cm diameter
£300 - 500



Lot 481

A Chinese white jade ring, 20th century, 2.6cm, a white jade pendant, in the shape of an ingot with scrolls, 4cm, and a hardstone carving, of a Budai, 6.5cm (3)
£60 - 80



Lot 482

A Chinese famille rose vase, of globular form on a circular foot with flared mouth, painted continuously with a landscape, the reverse with an inscription, six character *Qianlong* mark, 20cm high
£150 - 200



Lot 483

A pair of Chinese bronze Buddhist lions, each decorated with enamel scrolls, one standing on a raised pierced rectangular plinth, 13 and 17cm high (2)
£100 - 150



Lot 484

A Chinese Peking glass snuff bottle, of ovoid form, the sides with Buddhist lion handles, 6.5cm high
£60 - 80

**Lot 485**

A collection of nine Chinese snuff bottles, 20th century, including porcelain, agate, Peking glass, jade and crystal examples, 6 to 7.8cm (9)
£100 - 150

**Lot 486**

Two Chinese snuff bottles, 20th century, one blue and white decorated with an official seated on the back of a horse, and a farmer pointed direction for him, surrounded by underglaze red, coral stopper, *six character Yongzheng mark*, 9cm, and another blue and white, in the shape of a flask, painted with flowers, 5.5cm (2)
£60 - 80

**Lot 487**

A Chinese blue and white dish, Qianlong (1736-1795), of lobed quatrefoil form painted with deer by a pine tree in a garden, 29.9cm long, two famille rose spoon trays, of lobed hexagonal form, one painted with a lady and a boy in a study, the other with figures in a garden listening to a girl playing a flute, 13cm long, two Chinese blue and white snuff bottles, one cylindrical painted with a landscape, *six character Qianlong mark*, the other of square form painted with geese in a lake, 7cm high each, a famille rose snuff bottle moulded with Luohan, *four character Qianlong mark*, 6.6cm high, a Japanese blue and white inro, 4.5cm high, and a Japanese cloisonné vase, enamelled with chrysanthemum and irises against a midnight blue ground, 12.5cm high (8)
£100 - 150

**Lot 488**

A Chinese Yixing ware teapot, of squat form, the base with an inscription and signature of Mengchen, the cover with the same signature, 18.5cm long
£60 - 80

**Lot 489**

A Chinese Yixing ware teapot, of globular form on a circular foot, seal mark to base, 14.5cm long
£60 - 80

**Lot 490**

A Chinese yixing ware teapot, of squat circular form, seal marks to cover and base, 20cm long
£50 - 80

**Lot 491**

A collection of Yixing Zisha ware, comprising: two teapots with inscriptions, 16.5cm each, a square vase with inscriptions, 20.3cm high, and an incense burner, 16.5cm wide (4)
£100 - 150

**Lot 492**

Three Chinese Yixing teapots, one enamelled with a butterfly and flowers, a bat and peaches to the cover, 20cm wide, and two others, 21 and 22cm wide (3)
£100 - 150



Lot 493

A Chinese lacquered Yixing teapot, the exterior with gourds amongst tendrils and flowers, the cover similarly decorated with a ball knob, 14cm long, and a lacquered box and cover, 7.3cm diameter (3)
£60 - 80



Lot 494

A Chinese Yixing zisha teapot and cover, of circular form, moulded with fruiting vine, the handle, spout and finial imitating tree trunks, four character stamped mark to base, 15cm high (2)
£50 - 80



Lot 495

A collection of three Yixing teapots, 20th century, one in the form of a pomegranate, the cover with finger citron knob, seals to base and cover, 16cm long, one with incised bamboo and calligraphy, 19cm long, and another with an incised landscape, 15.5cm high (6)
£100 - 150



Lot 496

A Japanese bronze censer, Meiji period (1868-1912), of rectangular form on four scroll feet, moulded with birds flying above waves, mask and tongue handles, 23.5cm long
£40 - 60



Lot 497

A Japanese hanging scroll, painted with an official crossing a river on the back of a horse, followed by his attendant, farmers and mountains in the distance, ink and colour on silk, 122 x 50.5cm, and a gouache painting of a *bijin* looking in a mirror, 25.7 x 23cm, framed and glazed (2)
£70 - 100



Lot 498

A pair of Japanese bronze candlesticks, Meiji period (1868-1912), each with a crane holding a candle holder in its beak, a smaller crane by its side, standing on a raised pedestal with four shaped legs, 24cm high, and a large example, of a crane standing on a lotus leaf, holding a sprig of lotus flower in its beak, 29.5cm high (3)
£60 - 80



Lot 499

Two Japanese wood netsuke, Meiji period (1868-1912), one carved with a boy hiding a mask behind his back, signed Masakazu, 4.2cm long, the other one carved with one man carrying an *okedo taiko* drum on the shoulder and another man with a fan, 4.2cm high, together with two lacquered sake dishes, one with butterflies, the other with flowers, both against a red ground, 7.4 and 8.5cm (4)
£100 - 150



Lot 500

Two Japanese hanging scrolls, 20th century, one painted with pavilions in the woods, signed, ink on paper, 37 x 50.5, another painted with a fisherman in a boat, a pavilion and waterfall in the distance, signed, ink on paper, 93 x 30cm (2)
£100 - 150



Lot 501

In-syum Jung (1886-1954), 'SEOK HA', painted with butterflies and flowers to seals, ink and colour on paper, 32 x 44.5cm, framed and glazed
£60 - 80



Lot 502

An Asian bronze model of a tiger, with patinated stripes, 47cm long
£50 - 80



Lot 503

After Yoshida Hiroshi (1887-1950), 'Sailing boats - morning', originally a Japanese woodblock print from the Setonaikai (Inland Sea) series in 1926, with stamped signature and title, 51 x 35.5cm, framed and glazed
£70 - 100



Lot 504

A Japanese Imari goblet, 19th century, painted with a landscape in a roundel surrounded by flowers, the stem and base painted in gilt, 10.5cm high
£40 - 60



Lot 505

A Japanese album, early 20th century, containing eighteen paintings of birds, flowers, insects, sea life and vegetables, ink and colour on silk, each picture 21 x 17.5cm
£50 - 80



Lot 506

A pair of Japanese cloisonné vases, Meiji period (1868-1912), of tapering form, decorated with birds standing on a rock by chrysanthemum and other flowers, 12.5cm high (2)
£50 - 80



Lot 507

A bronze water dropper, in the shape of a snail, 8cm wide
£60 - 80



Lot 508

A Cambodian Khmer box and cover, 15th to 16th century, of tapering form on a short circular base, painted with panels of flowers, the domed cover similarly decorated with a spear knob, 12cm high, and a terracotta jar, 9.5cm high (3)
£40 - 60



Lot 509

A Japanese gouache picture, painted with birds flying amongst chrysanthemum, morning glory, magnolia and prunus, signed and dated autumn, 6th year of Meiji (1873) ink and colour on silk, 120.5 x 44.5cm, framed and glazed
£70 - 100

If you are unable to attend the sale we are happy to execute bids on your behalf. This service is free and confidential.

NAME: _____

TITLE: INITIALS: CLIENT NO.

ADDRESS: _____

POSTCODE: TEL (DAYTIME)

If you successfully purchase a lot, or lots, we will forward an invoice shortly after the sale by email or within 3 working days by post. We recommend that you check the success of your bids after the sale on our website.

- Where we receive more than one bid of the same value, the one received first will take precedence.
- Where appropriate, your bids will be rounded down to the nearest amount consistent with the Auctioneer's bidding increments.
- Please note our post is not delivered until midday, therefore postal bids need to reach us on the day preceeding the sale.
- We draw attention to our full terms and conditions on our website.

Received

Date: _____

Time:

By: _____

Entered

Date: _____

Time: _____

By: _____

Bid No.	
---------	--

Forward to:
SWORDERS FINE ART AUCTIONEERS,
CAMBRIDGE ROAD, STANSTED MOUNTFITCHET,
ESSEX CM24 8GE
TEL: 01279 817778 FAX: 01279 817779
www.sworder.co.uk

Please bid on my behalf for the above mentioned lots up to the limits shown, without legal obligation to Sworders, its staff or agents, or without prejudice to Sworders standard Terms and Conditions printed in this catalogue.

Signed: _____

Date: _____



INFORMATION FOR BUYERS

Introduction

The following notes are intended to assist bidders and buyers, particularly those that are inexperienced or new to our salerooms. All of our auctions are governed by our Conditions of Business incorporating the Terms of Consignment (primarily applicable to sellers), the Terms of Sale (primarily applicable to bidders and buyers) and any notices that are displayed in our salerooms or announced by the auctioneer at the auction. Our Conditions of Business are available for inspection at our salerooms and the Terms of Sale are printed in the back of our auction catalogues. Our staff will be happy to help you if there is anything in our Conditions of Business that you do not fully understand.

Please make sure that you read our Terms of Sale set out in this catalogue or on our website carefully before bidding in the auction. If your bid is successful, you will be obliged to comply with our Terms of Sale.

Methods of Payment

Lots must be paid for before they are collected. For those attending the auction we ask that lots are paid for on the day of the sale. Methods by which we accept payment are detailed on our web site, including online payment upon receipt of your invoice, and these should be paid by 5pm on the Friday following the sale. We accept cash to an upper limit of 10,000 euros equivalent. We accept credit card payments to an upper limit of £5,000. Usually any cheques will need to be cleared before you can take the goods away.

Collection and storage

All lots should be paid for and collected by 5pm on the Friday following the sale. Commission bidders should check the success of their bids and arrange payment and collection within this time. Please note what the Terms of Sale say about collection and storage. Items not removed by 5pm on Friday may be removed at the purchaser's expense and storage charges of £10 as an administration fee and £2 per lot per day may be charged (plus vat). Please note that we will apply these charges strictly to Furniture purchased in our Homes and Interiors Sales.

Dispatch

We are rarely able to pack and dispatch purchases. A choice of shippers is detailed on our web site.

Agency

As auctioneers we usually act on behalf of the seller whose identity, for reasons of confidentiality, is not normally disclosed. If you buy at auction your contract for the goods is with the seller, not with us as auctioneer.

Estimates

Estimates are designed to help you gauge what sort of sum might be involved for the purchase of a particular lot. Estimates may change and should not be thought of as the sale price. The lower estimate may represent the reserve price (the minimum price for which a lot may be sold) and will not be below the reserve price. Estimates do not include the buyer's premium or VAT (where chargeable). Estimates are prepared some time before the auction and may be altered by a saleroom notice or announcement by the auctioneer before the auction of the lot. They are not definitive.

Buyer's Premium

The Terms of Sale oblige you to pay a buyer's premium at 23% on the hammer price of each lot purchased, except for our Fine Wine and Port auctions when it is 15%. In addition, VAT is charged on these premiums (see below).

VAT

Items in our catalogue may be marked with a dagger † or double dagger ‡, which indicates that VAT is payable by the buyer on the hammer price and the buyer's premium at either the standard rate (currently 20%) or a reduced rate (currently 5%), depending upon the legal requirements relating to that lot.

Lots with a ^ symbol have been imported from outside the EU for sale and placed under the Temporary Admission regime. Import VAT is payable at 5% on the hammer price, by the buyer, in addition to the buyer's premium and ARR (where it applies).

The successful bidder is responsible for any applicable tax including any VAT, wherever such VAT may arise on the hammer price or the buyer's premium. It is the buyer's responsibility to ascertain that and pay all taxes due.

If you are an EU VAT registered buyer or a non EU buyer, and wish to know whether you may be able to reclaim VAT, we will be pleased to let you know the circumstances when we will refund the VAT. If you are a UK registered buyer and wish to request whether we can re-invoice outside of the Margin Scheme under the standard VAT rules, we will be pleased to assist. Please contact our Accounts Office on auctions@sworders.co.uk or call us on +44 (0) 1279 817778.

Lots which do not have either of the above symbols have no VAT payable on the hammer price. This is because such lots are sold using the Auctioneers' Margin Scheme. The VAT included within the premium is not recoverable as input tax.

Inspection of goods by the buyer

As we act on behalf of the seller, we are dependent on information provided by the seller about their goods. We may inspect lots and will act reasonably in taking a general view about them. However, we are normally unable to carry out detailed examinations of lots to check their condition in the way a buyer would do. You will have ample opportunity to inspect the goods. You must inspect and investigate lots that you might wish to bid for. **Please note carefully the exclusion of liability for the condition of lots set out in the Terms of Sale at clause 12.4.**

Condition Reports

We may be able to assist buyers unable to view by emailing a condition report, but these are based solely on our own opinion and are for guidance only and no responsibility is accepted for their accuracy. Intending buyers are strongly encouraged to view. Condition reports cannot be prepared on the day of the sale.

Electrical goods

These are sold as "antiques" only. If you buy electrical goods for use you must ask a qualified electrician to check them for compliance with safety regulations before you use them.

Export of goods

If you intend to export goods you must find out:

- whether an export licence is needed; and
- if there is a prohibition on importing goods of that character e.g. because the goods contain prohibited materials such as ivory.

Bidding

Bidders will be required to register with us before the auction starts. We reserve the right to impose a deadline prior to the auction by which you must register or by which we must receive a commission bid. If you wish to bid on high value lots this deadline may be several days before the auction in order to allow us sufficient time to carry out the necessary checks. Lots will be invoiced to the name and address on the registration form. You will need to provide us with proof of your identity in a form acceptable to us and such other information as we may require. Please enquire in advance about our arrangements for telephone or online bidding. Please note that we may refuse to register you if you do not provide us with all the information and documentation that we ask for or at our discretion.

Commission bidding

You may leave commission bids with us indicating the maximum amount to be bid against a lot (excluding the buyers' premium and/or any applicable VAT). We will execute commission bids as cheaply as possible having regard to the reserve (if any) and competing bids. If two buyers submit identical commission bids we may prefer the first bid received (where this can be reasonably ascertained). We recommend leaving commission bids online via our website, though please contact us about leaving bids by telephone or fax/email. All absentee bids should be received at least 30 minutes before the auction commences; we cannot guarantee to execute commission bids received after this time.

Telephone Bidding

If you are unable to come to the auction it may be possible to bid on the telephone for higher value lots. Please note that this service is for lots with an estimate of £500 or more. The number of lines is limited so we would urge serious telephone bidding only and ask that you be prepared to bid over the top estimate. It is advisable to leave a maximum covering bid in case we are not able to contact you by telephone. All lines must be booked and confirmed in writing before the day of the auction and preferably some time in advance. Telephone bidding involves many variables and whilst we take every care to ensure the smooth operation of this service, we cannot be held liable if your bids are missed for any reason.

Online Bidding

Any lots purchased via a live online bidding service will be subject to an additional commission charge on the hammer price payable by the bidder, in accordance with rates specified by the online service. From 1 November 2018 these charges will be charged at 3% plus VAT while bidding via Sworders website. If bidding through the-saleroom.com this will be charged at 4.95% plus VAT. Both charges will be payable to us on top of the hammer price and our buyer's commission.

IMPORTANT NOTICES

Removal of lots

ALL lots are to be removed from the premises by **5.00pm at the latest on the Friday following each sale**. Sworders retain the right to remove lots remaining after this time into safe storage, for which a charge will be made.

Electrical Goods

All electrical goods offered in this sale have either been tested and certified safe or unsafe by an appropriately qualified electrician. All electrical goods certified safe must be re-commissioned by an appropriately qualified electrician and we recommend those certified safe are similarly re-commissioned.

Post 1950 Upholstered Furniture

All items of furniture included in this sale are offered for sale as works of art. The items may not comply with the Furniture and Furnishings (Fire) Safety Regulations 1988 and for this reason, they should not be used in a private dwelling.

Furniture made of Brazilian Rosewood (Dalbergia Negra)

To comply with CITES Regulations on Post-1947 furniture made of Brazilian Rosewood, all post-war rosewood furniture items have Article 10 certificates.

If you are purchasing rosewood furniture for commercial purposes and not solely for your own use, CITES regulations require you to obtain your own certificate. You would need to contact the Animal Health and Veterinary Laboratories Agency ('AHVLA') and, as part of the process of obtaining your document, it is a requirement that you have seen sight of the Sworders' certificate or are aware of its reference number.

It is therefore the responsibility of commercial buyers to ensure that they obtain a copy of the appropriate certificate, or the certificate reference number, after purchase from Sworders Fine Art Auctioneers. Items are marked with this sign §.

TERMS OF SALE

Both the sale of goods at our auctions and your relationship with us are governed by the Terms of Consignment (primarily applicable to sellers) the Terms of Sale (primarily applicable to bidders and buyers) and any notices displayed in the saleroom or announced by us at the auction (collectively, the "Conditions of Business"). The Terms of Consignment and Terms of Sale are available at our saleroom on request.

Please read these Terms of Sale carefully. Please note that if you register to bid and/or bid at auction this signifies that you agree to and will comply with these Terms of Sale.

Please note that these Terms of Sale relate to auctions held at our premises only. We have separate terms for online only auctions.

1. Definitions and interpretation

To make these Terms of Sale easier to read, we have given the following words a specific meaning:

"Auctioneer"	means GES & Sons Ltd trading as Sworders Fine Art Auctioneers, a company registered in England and Wales with registration number 6858916 and whose registered office is located at Cambridge Road, Stansted Mountfitchet, Essex CM24 8GE or its authorised auctioneer, as appropriate;
"Bidder"	means a person who places a bid for Goods at our auction;
"Buyer"	means the person who makes the highest bid for the Goods accepted by the Auctioneer;
"Commission"	means the commission that we charge you on the sale of the Goods as set out in Clause 5 below;
"Consumer"	means an individual acting for purposes which are wholly or mainly outside that individual's trade, business, craft or profession;
"Consumer Contracts Regulations"	means the Consumer Contracts (Information, Cancellation and Additional Charges) Regulations 2013;
"Deliberate Forgery"	means: (a) an imitation made with the intention of deceiving as to authorship, origin, date, age, period, culture or source; (b) which is described in the catalogue as being the work of a particular creator without qualification; and (c) which at the date of the auction had a value materially less than it would have had if it had been as described;
"FCA"	means the Financial Conduct Authority;
"Goods"	means the goods that you consign to us for sale at our auction;
"Hammer Price"	means the level of the highest bid for a Lot accepted by the Auctioneer;
"Premium"	means the premium charged to the Buyer on the sale of the Goods in accordance with the Terms of Sale;
"Price"	means the total of the Hammer Price, Premium and any applicable VAT;
"Proceeds"	means the Price less the Commission, the Premium, any expenses incurred to your account and any applicable VAT;
"Reserve"	means the minimum price at which the Goods may be sold;
"Seller"	means the owner of the Goods and any agent who consigns the Goods for sale on the owner's behalf (if applicable);
"Terms of Consignment"	means these terms of consignment;
"Terms of Sale"	means the terms of sale for bidders or buyers at our auctions;
"Trader"	means a Seller who is acting for purposes relating to that Seller's trade, business, craft or profession, whether acting personally or through another person acting in the trader's name or on the trader's behalf (such as an agent and/or the Auctioneer);
"VAT"	means any value added tax or equivalent sales tax; and
"Website"	means our website available at www.sworders.co.uk .

In these Terms of Sale the words 'you', 'yours', etc. refer to you as the Buyer. The words 'we', 'us', etc. refer to the Auctioneer. Any reference to a 'Clause' is to a clause of these Terms of Sale unless stated otherwise.

2. Information that we are required to give to Consumers

2.1 A description of the main characteristics of each Lot as contained in the auction catalogue.

2.2 Our name, address and contact details as set out herein, in our auction catalogues and/or on our Website.

2.3 The price of the Goods and arrangements for payment as described in Clauses 4, 5, 7 and 8.

2.4 The arrangements for collection of the Goods as set out in Clauses 8 and 9.

2.5 Your right to return a Lot and receive a refund if the Lot is a Deliberate Forgery as set out in Clause 13.

2.6 We and Trader Sellers have a legal duty to supply any Lots to you in accordance with these Terms of Sale.

2.7 If you have any complaints, please send them to us directly at the address set out on our Website.

3. Bidding procedures and the Buyer

3.1 You must register your details with us before bidding and provide us with any requested proof of identity and billing information, in a form acceptable to us. You must also satisfy any security arrangements we have in place before entering the auction room to view or bid.

3.2 We strongly recommend that you attend the auction in person. You are responsible for your decision to bid for a particular Lot. If you bid on a lot, including by telephone and online bidding, or by placing a commission bid, we assume that you have carefully inspected the Lot and satisfied yourself regarding its condition.

3.5 Bidders will be deemed to act as principals, even if the Bidder is acting as an agent for a third party.

3.6 We may bid on Lots on behalf of the Seller up to one bid below the Reserve.

3.7 We may refuse to accept any bid if it is reasonable for us to do so.

3.8 Bidding increments will be at our sole discretion (but will be in line with standard auction practice).

4. The purchase price

As Buyer, you will pay:

- the Hammer Price;
- a premium of 23% plus VAT of the Hammer Price or 15% plus VAT for our Fine Wine and Port Auction;
- any artist's resale right royalty payable on the sale of the Lot; and
- any VAT due.

5 VAT

5.1 You shall be liable for the payment of any VAT applicable on the Hammer Price and premium due for a Lot. Please see the symbols used in the auction catalogue for that Lot and the "Information for Buyers" in our auction catalogue for further information.

5.2 We will charge VAT at the current rate at the date of the auction.

6. The contract between you and the Seller

6.1 The contract for the purchase of the Lot between you and the Seller will be formed after the hammer falls when the highest bid for the Goods at the auction is written into the Auction book by the Auctioneer.

6.2 You may directly enforce any terms in the Terms of Consignment against a Seller to the extent that you suffer damages and/or loss as a result of the Seller's breach of the Terms of Consignment.

6.3 If you breach these Terms of Sale, you may be responsible for damages and/or losses suffered by a Seller or us. If we are contacted by a Seller who wishes to bring a claim against you, we may in our discretion provide the Seller with information or assistance in relation to that claim.

6.4 We normally act as an agent only and will not have any responsibility for default by you or the Seller (unless we are the Seller of the Lot).

7. Payment

7.1 Immediately following your successful bid on a Lot you will:

7.1.1 give to us, if not already provided to our satisfaction, proof of identity in a form acceptable to us (and any other information that we require in order to comply with our anti-money laundering obligations); and

7.1.2 pay to us the Total Amount Due in any way that we agree to accept payment. Note there is an upper limit of 10,000 euros equivalent for payments in cash.

7.2 If you owe us any money, we may use any payment made by you to repay these debts.

8. Title and collection of purchases

8.1 Once you have paid us in full the Total Amount Due for any Lot, ownership of that Lot will transfer to you. You may not claim or collect a Lot until you have paid for it.

8.2 You will (at your own expense) collect any Lots that you have purchased and paid for not later than 5pm on the Friday following the auction.

8.3 If you do not collect the Lot within this time period, you will be responsible for any reasonable removal and storage charges in relation to that Lot.

8.4 Risk of loss or damage to the Lot will pass to you when you (or your agents) take physical possession of the Lot.

8.5 If you do not collect the Lot that you have paid for within thirty days after the auction, we may sell the Lot. We will pay the proceeds of any such sale to you, but will deduct any storage charges or other sums that we have incurred in the storage and sale of the Lot. We reserve the right to charge you a selling commission at our standard rates on any such resale of the Lot.

9. Remedies for non-payment or failure to collect purchases

9.1 Please do not bid on a Lot if you do not intend to buy it. If your bid is successful, these Terms of Sale will apply to you.

This means that you will have to carry out your obligations set out in these Terms of Sale. If you do not comply with these Terms of Sale we may (acting on behalf of the Seller and ourselves) pursue one or more of the following measures:

9.1.1 take action against you for damages for breach of contract;

9.1.2 reverse the sale of the Lot to you and/or any other Lots sold by us to you;

9.1.3 resell the Lot by auction or private treaty (in which case you will have to pay any difference between the price you should have paid for the Lot and the price we sell it for as well as the charges outlined in Clause 8.5). Please note that if we sell the Lot for a higher amount than your winning bid, the extra money will belong to the Seller;

9.1.4 remove, store and insure the Lot at your expense;

9.1.5 if you do not pay us within **five business days** of your successful bid, we may charge interest at a rate not exceeding 1.5% per month on the total amount due;

9.1.6 keep that Lot or any other Lot sold to you until you pay the Total Amount Due;

9.1.7 reject or ignore bids from you or your agent at future auctions or impose conditions before we accept bids from you; and/or

9.1.8 if we sell any Lots for you, use the money made on these Lots to repay any amount you owe us.

9.2 We will act reasonably when exercising our rights under Clause 9.1. We will contact you before exercising these rights and try to work with you to correct any non-compliance by you with these Terms of Sale.

10. Health and safety

Although we take reasonable precautions regarding health and safety, you are on our premises at your own risk. Please note the lay-out of the premises and security arrangements. Neither we nor our employees or agents are responsible for the safety of you or your property when you visit our premises, unless you suffer any injury to your person or damage to your property as a result of our, our employees' or our agents' negligence.

11. Warranties

11.1 The Seller warrants to us and to you that:

11.1.1 the Seller is the true owner of the Lot for sale or is authorised by the true owner to offer and sell the lot at auction;

11.1.2 the Seller is able to transfer good and marketable title to the Lot to you free from any third party rights or claims; and

11.1.3 as far as the Seller is aware, the main characteristics of the Lot set out in the auction catalogue (as amended by any notice displayed in the saleroom or announced by the Auctioneer at the auction) are correct.

11.2 If, after you have placed a successful bid and paid for a Lot, any of the warranties above are found not to be true, please notify us in writing. Neither we nor the Seller will be liable to pay you any sums over and above the Total Amount Due and we will not be responsible for any inaccuracies in the information provided by the Seller except as set out below.

11.3 Please note that many of the Lots that you may bid on at our auction are second-hand.

11.4 If a Lot is not second-hand and you purchase the Lot as a Consumer from a Seller that is a Trader, a number of additional terms may be implied by law in addition to the Seller's warranties set out at Clause 11.1 (in particular under the Consumer Rights Act 2015). These Terms of Sale do not seek to exclude your rights under law as they relate to the sale of these Lots.

11.5 Save as expressly set out above, all other warranties, conditions or other terms which might have effect between the Seller and you, or us and you, or be implied or incorporated by statute, common law or otherwise are excluded.

12. Descriptions and condition

12.1 Our descriptions of the Lot will be based on: (a) information provided to us by the Seller of the Lot (for which we are not liable); and (ii) our opinion (although it is likely that we will not be able to carry out a detailed inspection of each Lot).

12.2 We will give you a number of opportunities to view and inspect the Lots before the auction. You (and any independent consultants acting on your behalf) must satisfy yourself about the accuracy of any description of a Lot. We shall not be responsible for any failure by you or your consultants to properly inspect a Lot.

12.3 Representations or statements by us as to authorship, genuineness, origin, date, age, provenance, condition or estimated selling price involve matters of opinion. We undertake that any such opinion will be honestly and reasonably held and accept liability for opinions given negligently or fraudulently.

12.4 Please note that Lots (in particular second-hand Lots) are unlikely to be in perfect condition. Lots are sold "as is" (i.e. as you see them at the time of the auction). Neither we nor the Seller accept any liability for the condition of second-hand Lots or for any condition issues affecting a Lot if such issues are included in the description of a Lot in the auction catalogue (or in any saleroom notice) and/or which the inspection of a Lot by the Buyer ought to have revealed.

13. Deliberate Forgeries

13.1 You may return any Lot which is found to be a Deliberate Forgery to us within 30 days of the auction provided that you return the Lot to us in the same condition as when it was released to you, accompanied by a written statement identifying the Lot from the relevant catalogue description and a written statement of defects.

13.2 If we are reasonably satisfied that the Lot is a Deliberate Forgery we will refund the money paid by you for the Lot (including any Premium and applicable VAT) provided that if:

13.2.1 the catalogue description reflected the accepted view of experts as at the date of the auction; or

13.2.2 you personally are not able to transfer good and marketable title in the Lot to us, you will have no right to a refund under this Clause 13.2.

13.3 If you have sold the Lot to another person, we will only be liable to refund the price that you paid for the Lot. We will not be responsible for repaying any additional money you may have made from selling the Lot.

13.4 Your right to return a Lot that is a Deliberate Forgery does not affect your legal rights and is in addition to any other right or remedy provided by law or by these Terms of Sale.

14. Our liability to you

14.1 We will not be liable for any loss of opportunity or disappointment suffered as a result of participating in our auction.

14.2 In addition to the above, neither we nor the Seller shall be responsible to you and you shall not be responsible to the Seller or us for any other loss or damage that any of us suffer that is not a foreseeable result of any of us not complying with the Conditions of Business. Loss or damage is foreseeable if it is obvious that it will happen or if at the time of the sale of the Lot, we, you and the Seller knew it might happen.

14.3 Subject to Clause 14.4, if we are found to be liable to you for any reason (including, amongst others, if we are found to be negligent, in breach of contract or to have made a misrepresentation), our liability will be limited to the total purchase price paid by you to us for any Lot.

14.4 Notwithstanding the above, nothing in these Terms of Sale shall limit our liability (or that of our employees or agents) for:

14.4.1 death or personal injury resulting from negligence (as defined in the Unfair Contract Terms Act 1977);

14.4.2 fraudulent misrepresentation; or

14.4.3 any liability which cannot be excluded by law.

15. Notices

15.1 All notices between you and us regarding these Terms of Sale must be in writing and signed by or on behalf of the party giving it.

15.2 Any notice referred in Clause 15.1 may be given:

15.2.1 by delivering it by hand;

15.2.2 by first class pre-paid post or Recorded Delivery; or

15.2.3 by email, provided that receipt of the email is acknowledged by the recipient.

15.3 Notices must be sent:

15.3.1 by hand or registered post:

a. to us, at our address set out in these Terms of Sale or at our registered office address appearing on our Website; and

b. to you, at the last postal address that you have given to us as your contact address in writing; or

15.3.2 by email:

a. to us, by sending the notice to the following email address: auctions@sworder.co.uk

b. to you, by sending the notice to any email address that you have given to us as your contact email address in writing.

15.4 Notices will be deemed to have been received:

15.4.1 if delivered by hand, on the day of delivery;

15.4.2 if sent by first class pre-paid post or Recorded Delivery, two business days after posting, exclusive of the day of posting; or

15.4.3 if sent by email, at the time of transmission unless sent after 17.00 in the place of receipt in which case they will be deemed to have been received on the next business day in the place of receipt (provided that receipt is acknowledged by the recipient).

15.5 Any notice or communication given under these Terms of Sale will not be validly given if sent by fax, email, any form of messaging via social media or text message.

16. Data Protection

We will hold and process any personal data in relation to you in accordance with our current privacy policy, a copy of which is available on our website.

17. General

17.1 We may, acting reasonably, refuse admission to our premises or attendance at our auctions by any person.

17.2 We act as an agent for our Sellers. The rights we have to claim against you for breach of these Terms of Sale may be used by either us, our employees or agents, or the Seller, its employees or agents, as appropriate. Other than as set out in this Clause, these Terms of Sale are between you and us and no other person will have any rights to enforce any of these Terms of Sale.

17.3 We may use special terms in the catalogue descriptions of particular Lots. You must read these terms carefully along with any glossary provided in our auction catalogues.

17.4 Each of the clauses of these Terms of Sale operates separately. If any court or relevant authority decides that any of them are unlawful, the remaining clauses will remain in full force and effect.

17.5 We may change these Terms of Sale from time to time, without notice to you. Please read these Terms of Sale carefully, as they may be different from the last time you read them.

17.6 Except as otherwise stated in these Terms of Sale, each of our rights and remedies are: (a) are in addition to and not exclusive of any other rights or remedies under these Terms of Sale or general law; and (b) may be waived only in writing and specifically. Delay in exercising or non-exercise of any right under these Terms of Sale is not a waiver of that or any other right. Partial exercise of any right under these Terms of Sale will not preclude any further or other exercise of that right or any other right under these Terms of Sale. Waiver of a breach of any term of these Terms of Sale will not operate as a waiver of breach of any other term or any subsequent breach of that term.

17.7 These Terms of Sale and any dispute or claim arising out of or in connection with them (including any non-contractual claims or disputes) shall be governed by and construed in accordance with the laws of England and the parties irrevocably submit to the exclusive jurisdiction of the English courts.

These terms are based upon the recommended terms of sale by the Society of Fine Art Auctioneers and Valuers







The Stansted Auction Rooms
Cambridge Road
Stansted Mountfitchet
Essex CM24 8GE
Tel 01279 817778
Fax 01279 817779
Email auctions@sworder.co.uk

Hertford Office
42 St Andrew Street
Hertford SG14 1JA
Tel 01992 583508
Fax 01992 586074
Email hertfordoffice@sworder.co.uk

London Office
15 Cecil Court
London
WC2N 4EZ
Tel 0203 971 2500
Email london@sworder.co.uk

Kent Office
Tel 01732 757675
Email kent@sworder.co.uk

www.sworder.co.uk



WeChat

ASIAN ART
IN LONDON

